

Appendix B

Correctional Statistics for Asia and the Pacific 2004

Table 1: Prisoners by Gender and Imprisonment Rates, mid 2004

Country/Area	Male	Female	Total	General Population('000)	Imprisonment rate (per 100000 population)	% of foreign nationals/non-locals
Australia	21745	1617	23362	18792	123.1	16.7 ¹
Brunei Darussalam	426	37	463	336.57	137.6	35.8
Canada ²	30886	1626	32512	24356.9	133.5	---
Cambodia	6430	348	6778	12000	56.5	2.1
China ³	1477212	71286	1548498	1265830	122.3	0.2
Fiji	1053	30	1083	775	139.7	1.2
Hong Kong (China)	10263	2828	13091	6842	191.3	39.2
Japan ⁴	69446	4288	73734	127520	57.8	7.7
Kiribati	81	0	81	84.494	95.9	0.0
Korea	54158	3744	57902	48500	119.4	1.3
Laos	3599	421	4020	5211.173	77.1	4.3
Macao (China)	790	85	875	450	194.4	38.2
Malaysia	39781	3643	43424	25000	173.7	39.8
Mongolia	6142	258	6400	2504	255.6	0.1
New Zealand	6409	393	6802	4060	167.5	0.3
Singapore	14991	1844	16835	4185.2	402.3	17.6
Sri Lanka ⁵	20274	701	20975	19252	108.9	0.9
Solomon Island	269	6	275	509.19	54.0	0.4
Thailand	155696	36274	191970	63075.765	304.3	5.1
Tonga	112	4	116	100	116.0	0.0

¹ the unknown nationalities were counted as local prisoners in Tasmania and NSW

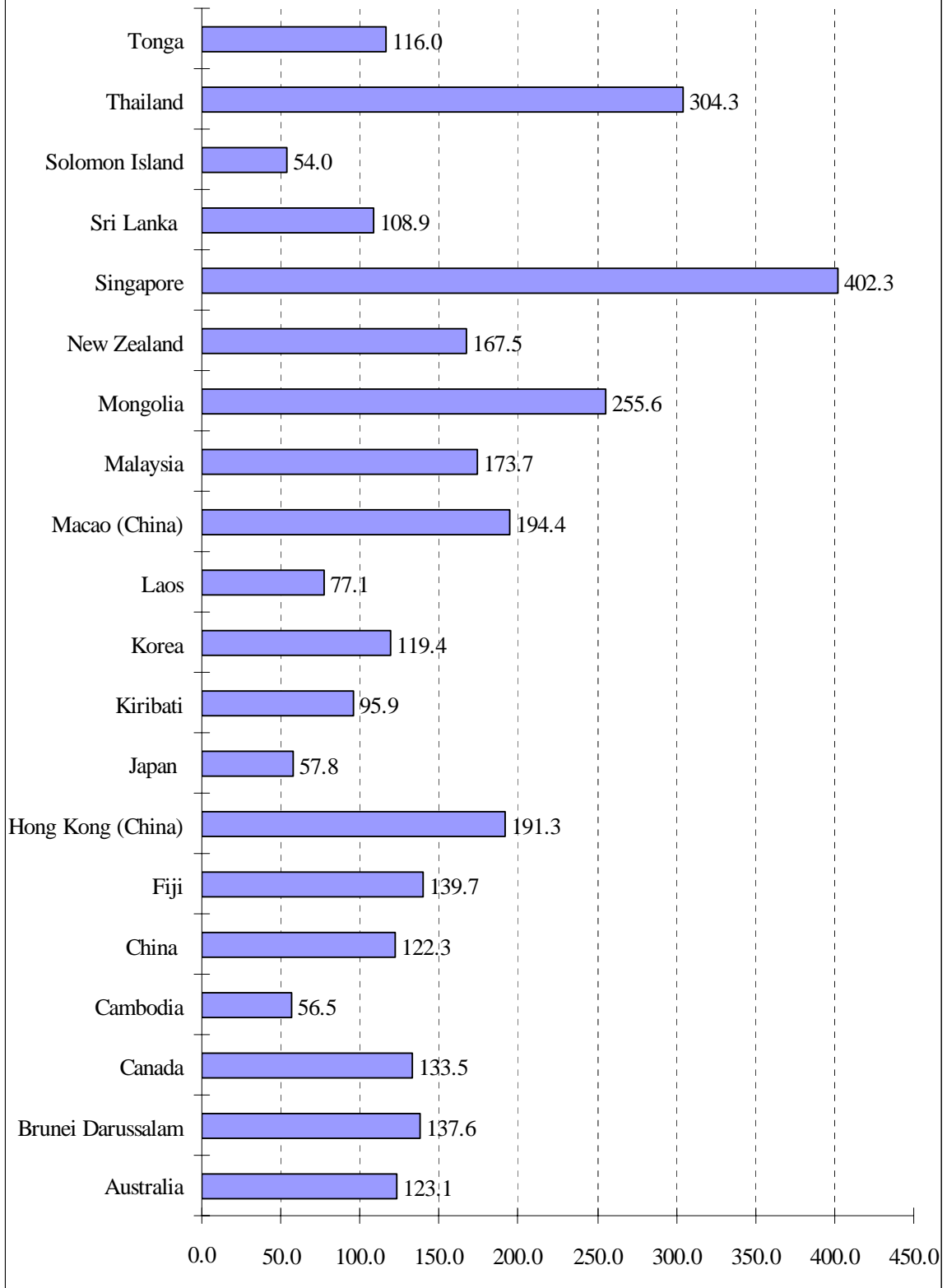
² refers to 2002-2003

³ refers to Dec 2003

⁴ refers to 31.12.2003

⁵ refers to 31.12.2003

**Imprisonment Rate (per 100 000 population)
Asia and the Pacific, mid 2004**



Correctional Statistics for Asia and Pacific 2004

Table 2: Unconvicted Remandees, mid 2004

Country/Area	Unconvicted remandees	% of remandees	Remand rate (per 100000 population)
Australia	4886	20.9	25.7
Brunei Darussalam	39	8.4	11.6
Canada ¹	8730	26.9	35.8
Cambodia	2124	31.3	17.7
Fiji	105	9.7	13.5
Hong Kong (China)	1480	11.3	21.6
Japan ²	12143	16.5	9.5
Kiribati	5	6.2	5.9
Korea	21821	37.7	45.0
Laos	40	1.0	0.8
Macao (China)	97	11.1	21.6
Malaysia	16997	39.1	68.0
Mongolia	1092	17.1	43.6
New Zealand	1275	18.7	31.4
Singapore	1497	8.9	35.8
Solomon Island	70	25.5	13.7
Sri Lanka ³	9988	47.6	51.9
Thailand	41708	21.7	66.1
Tonga	1	0.9	1.0

¹ refers to 2002-2003

² refers to 31.12.2003

³ refers to 31.12.2003

Correctional Statistics for Asia and Pacific 2004

Table 3(a): Institutional Staff* to Prisoner Ratio, mid 2004

Country/Area	Total institutional staff	Institutional staff to prisoner ratio
Australia	10368	1:2.3
Brunei Darussalam	508	1:0.9
Canada	27269	1:1.2
China	280521	1:5.5
Fiji	370	1:2.9
Hong Kong (China)	5547	1:2.4
Japan	17378	1:4.2
Kiribati	29	1:2.8
Korea	12354	1:4.7
Laos	578	1:7.0
Macao (China)	479	1:1.8
Malaysia	11763	1:3.7
Mongolia	1800	1:3.6
New Zealand	3073	1:2.2
Singapore	1833	1:9.2
Sri Lanka	4597	1:4.6
Solomon Island	18	1:15.3
Thailand	10516	1:18.3
Tonga	69	1:1.7

* 'Institutional Staff' refers to full time (or equivalent) staff working in prisons/correctional institutions, including all categories of staff in prisons/correctional institutions, but excluding those working in headquarters and training colleges.

Correctional Statistics for Asia and the Pacific 2004

Table 3(b): Custodial Staff* to Prisoner Ratio, mid 2004

Country/Area	Total institutional custodial staff	Custodial staff to prisoner ratio
Australia	8059 ¹	1:2.5
Brunei Darussalam	429	1:1.1
China	274470	1:5.6
Fiji	370	1:2.9
Hong Kong (China)	4813	1:2.7
Japan	16469	1:4.5
Kiribati	29	1:2.8
Korea	11105	1:5.2
Macao (China)	373	1:2.3
Malaysia	11048	1:3.9
Mongolia	1452	1:4.4
New Zealand	2220	1:3.1
Singapore	1741	1:9.7
Sri Lanka	4446	1:4.7
Solomon Island	330	1:0.8
Thailand	10516	1:18.3
Tonga	67	1:1.7

¹ data excluding Victoria

* 'Custodial Staff' refers to full time (or equivalent) custodial staff working in prisons/correctional institutions who are involved in direct custodial inmate supervision (i.e., excluding other supporting staff like medical doctors, psychologists, teachers, clerical staff, civilian personal, etc.).

Correctional Statistics for Asia and the Pacific 2004

Table 4(a): Rate of Offenders Receiving Community-based Supervised Sentences*, mid 2004

Country/Area	Total number of offenders receiving community-based supervised sentences	Rate of offenders receiving community-based supervised sentence (per 100000 population)
Australia	48902	257.7
Brunei Darussalam	---	---
Cambodia	---	---
Canada ¹	116974	480.2
China	---	---
Fiji	---	---
Hong Kong (China)	4432	64.8
Japan ²	15767	12.4
Kiribati	---	---
Korea	---	---
Laos	---	---
Macao (China)	91	20.2
Malaysia	---	---
Mongolia	---	---
New Zealand	21581	531.6
Singapore	---	---
Sri Lanka	---	---
Solomon Island	---	---
Thailand	---	---
Tonga	23	23.0

¹ refers to 2002-2003

² refers to 31.12.2003

* refers to Community-based Supervised Sentences imposed by the courts as an alternative to imprisonment / custodial sentence.

Correctional Statistics for Asia and the Pacific 2004

Table 4(b): Rate of Offenders Subject to Supervised Orders upon Release From a Custodial Sentence, mid 2004

Country/Area	Total number of offenders subject to supervised orders upon release from a custodial sentence	Rate of offenders subject to supervised order upon release from a custodial sentence (per 100000 population)
Australia	7874	41.5
Brunei Darussalam	---	---
Cambodia	---	---
Canada ¹	7222	29.7
China	5208	0.4
Fiji	---	---
Hong Kong (China)	2968	43.4
Japan ²	7949	6.2
Kiribati	4	4.7
Korea	---	---
Laos	---	---
Macao (China)	75	16.7
Malaysia	---	---
Mongolia	---	---
New Zealand	3365	82.9
Singapore	765	18.3
Sri Lanka	108	0.6
Solomon Island	---	---
Thailand	---	---
Tonga	7	7.0

¹ refers to 2002-2003

² refers to 31.12.2003

Correctional Statistics for Asia and Pacific 2004

Trend of Imprisonment Rate in Asia and the Pacific (1995-2004)

	1995	1996	1997	1998	1999	2000	2001	2002	2003	2004
Bangladesh	37.1									
India	23.5	24.3	24.8	25.2				26.5		
Indonesia		23.1	21.3	24	26	25.4	30.9		36.7	
Nepal										
Philippines	26.2	27	28.5	30.3	28		30.9	31.9	35	
Pakistan (State of Jammu and Kashmir)									28.8	

Imprisonment Rate

	1995	1996	1997	1998	1999	2000	2001	2002	2003	2004
Cambodia	26	28.3	27.2	29.1	36	45.9	51.5	49	52.9	56.5
Japan	37.8	39.3	40.4	41.7	44.3	48.3	51.5	54.6	57.8	
Laos										77.1
Solomon Islands	45.5	40.9	38.7	25.5	31					54.0
Tuvalu						66.7				
Vanuatu	54.3							48	46.5	
Vietnam		58.9		70.5	70.5					

Imprisonment Rate

	1995	1996	1997	1998	1999	2000	2001	2002	2003	2004
Australia	89.3	93.4	95.1	99.9	108.8	108.9	111.2	111	116.1	123.1
Brunei Darussalam	109.7	114.6		96.9	88	98.4	119.3	136.7	146.2	137.6
China	103	106.7	115.2	120	112	109.8	112.8	116.7	121.3	122.3
Kiribati	130					73.1	74.1	75.7	78.1	95.9
Papua New Guinea		99.1		94.8	94		86.7	67		
Sri Lanka			77.8	78.4	100	88.7	106	93.3	105.1	108.9
Tonga						55.3	90.2	110	111.9	116.0

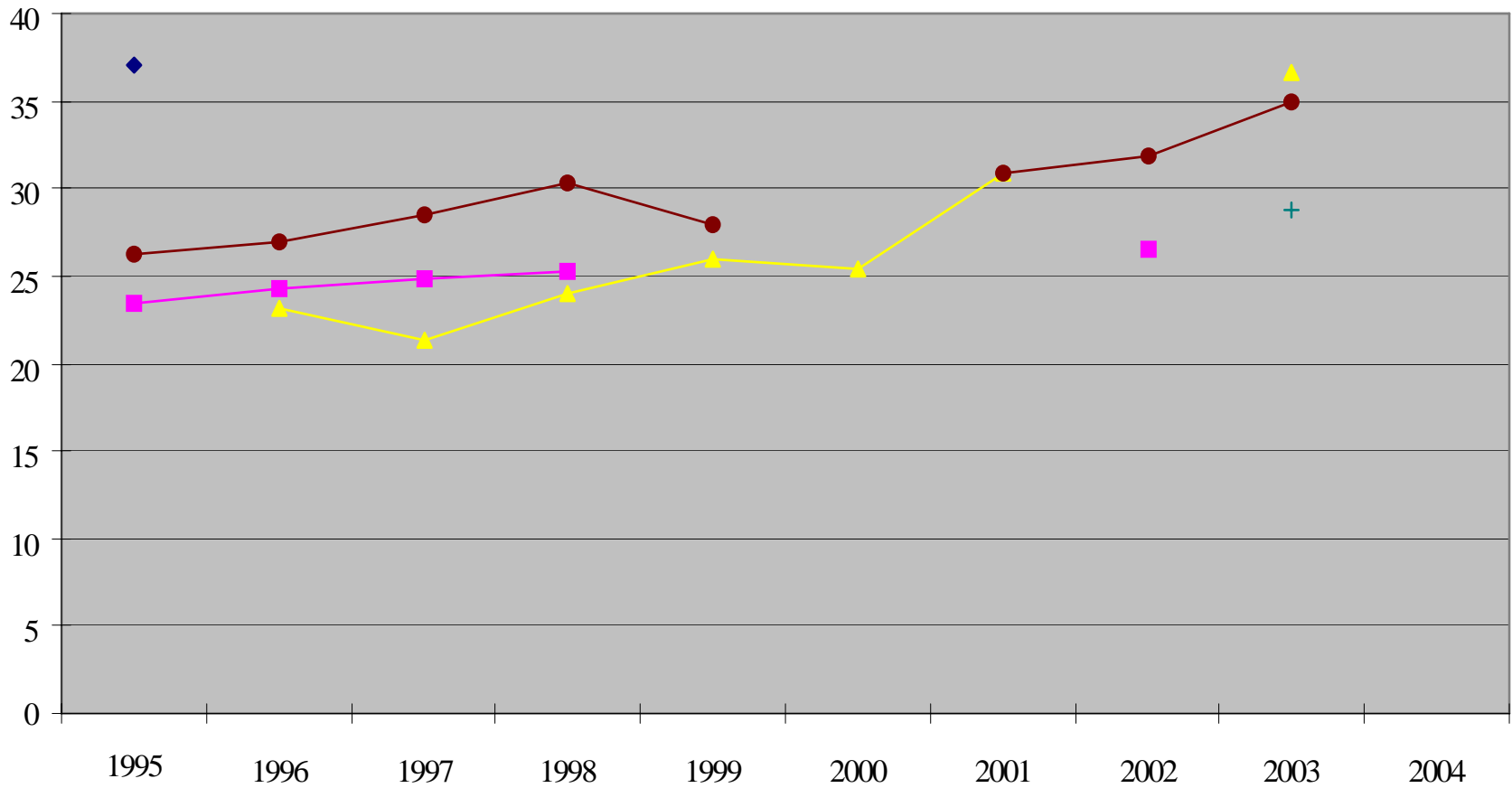
Imprisonment Rate

	1995	1996	1997	1998	1999	2000	2001	2002	2003	2004
Cook Islands	225					153.3	165	117.6	90.4	
Fiji	122.7	130.4	141.1	117.5	152	152.5	142.2	115.7	126.7	139.7
Korea	137.3	138.7	120.3	152.9	147	135.3	131.5	128.9	122.5	119.4
Malaysia	104.2	108.2	108.4	120.5	123	104	124.1	125.2	158.5	173.7
New Zealand	126.8	129.6	143.1	146.3	152	148.1	154.7	149.3	155.3	167.5
Samoa	154.5			109.3						

Imprisonment Rate

	1995	1996	1997	1998	1999	2000	2001	2002	2003	2004
Canada	53		446	114.9	109	107	103.7	102.5	133.5	
Hong Kong	207.2	201.1	184.4	163.2	164	164	173.8	181.2	180.1	191.3
Macao	107.1	114.3	154.7	152	180	207.7	195.7	208.3	200.7	194.4
Singapore	287.3	304.2	517.3	289.8	317	344.8	366	394.8	438.4	402.3
Thailand	180.5	173.1	201.6	270	320	334.1	351.8	402.6	340.5	304.3
Mongolia		252.9		253.5	256		277.3	297.1	318	255.6

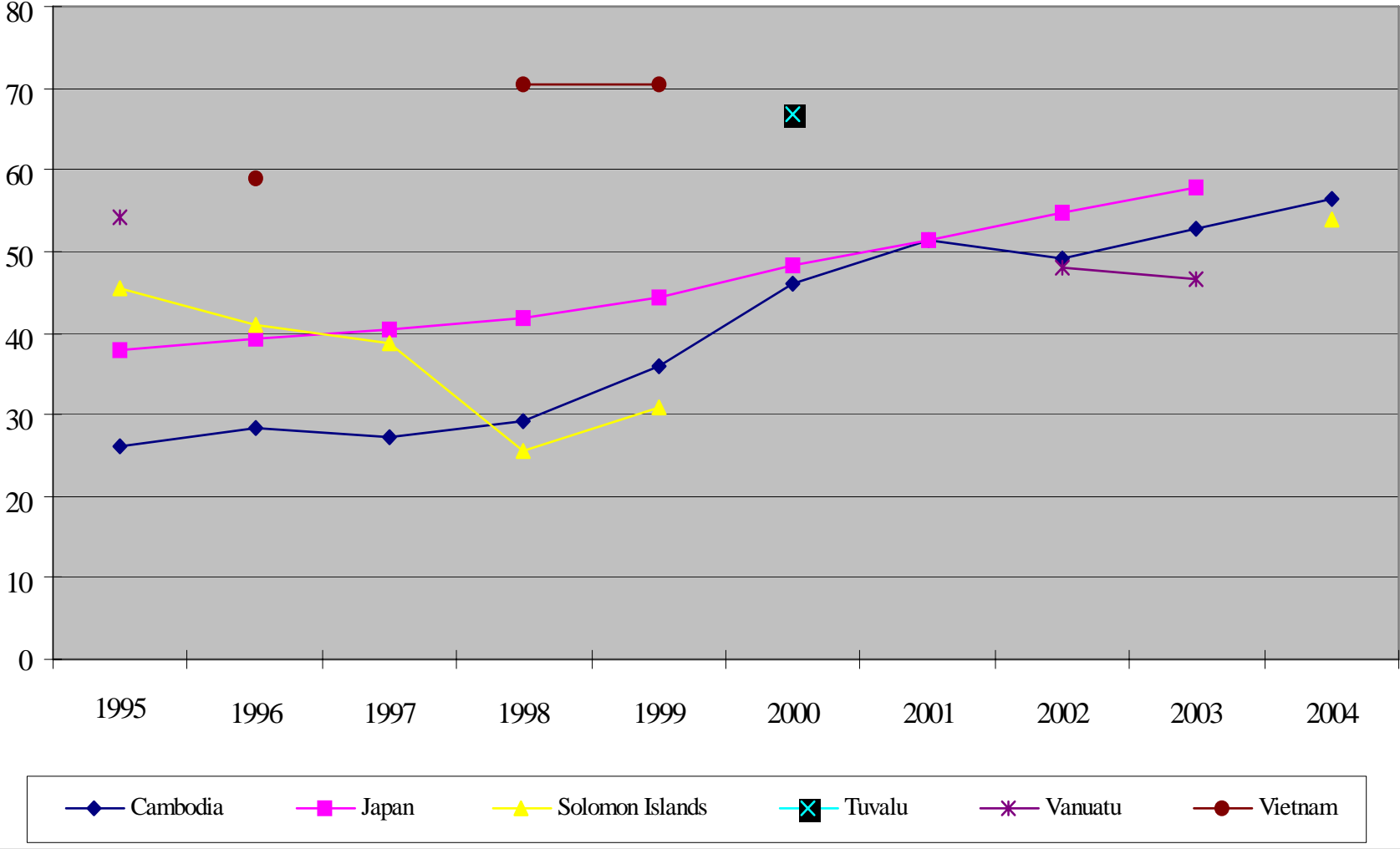
Imprisonment Rate of Asia and the Pacific (1995-2004) - Chart 1A



Legend: Bangladesh (blue diamond), India (magenta square), Indonesia (yellow triangle), Nepal (purple asterisk), Philippines (dark red circle), Pakistan (State of Jammu and Kashmir) (teal plus)

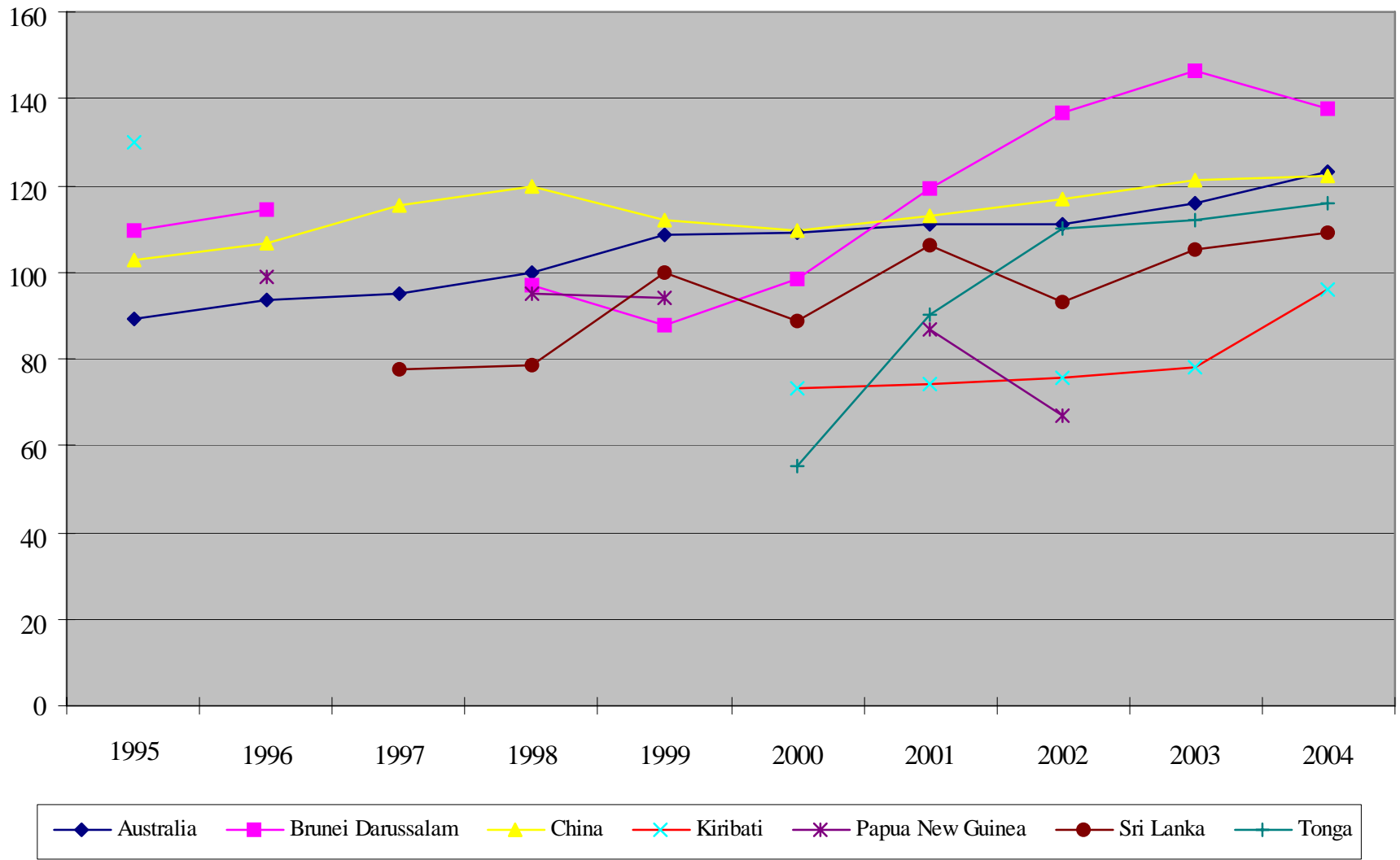
-per 100,000 of the general population

Imprisonment Rate of Asia and the Pacific (1995-2004) - Chart 1B



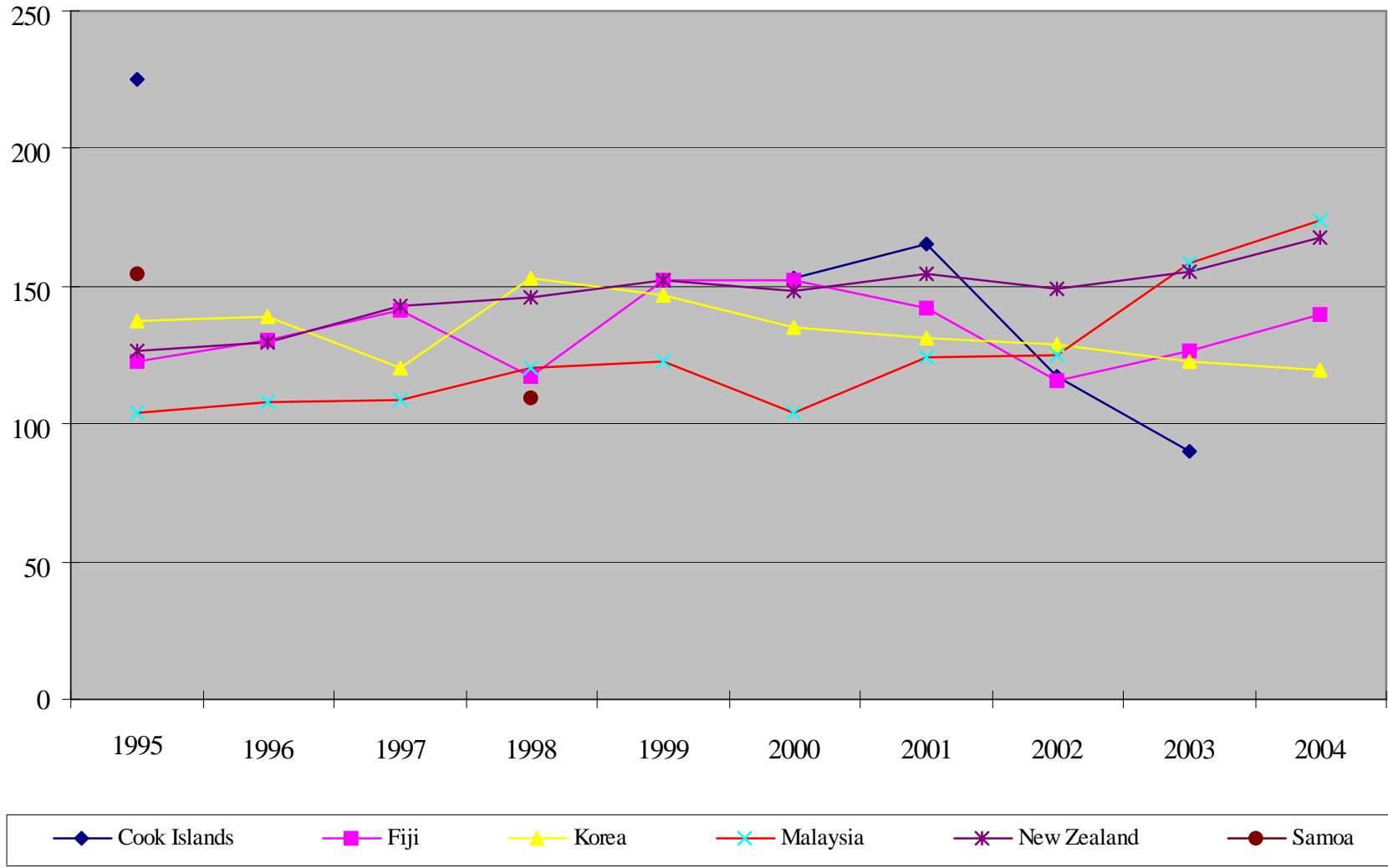
-per 100,000 of the general population

Imprisonment Rate of Asia and the Pacific (1995-2004) - Chart 1C



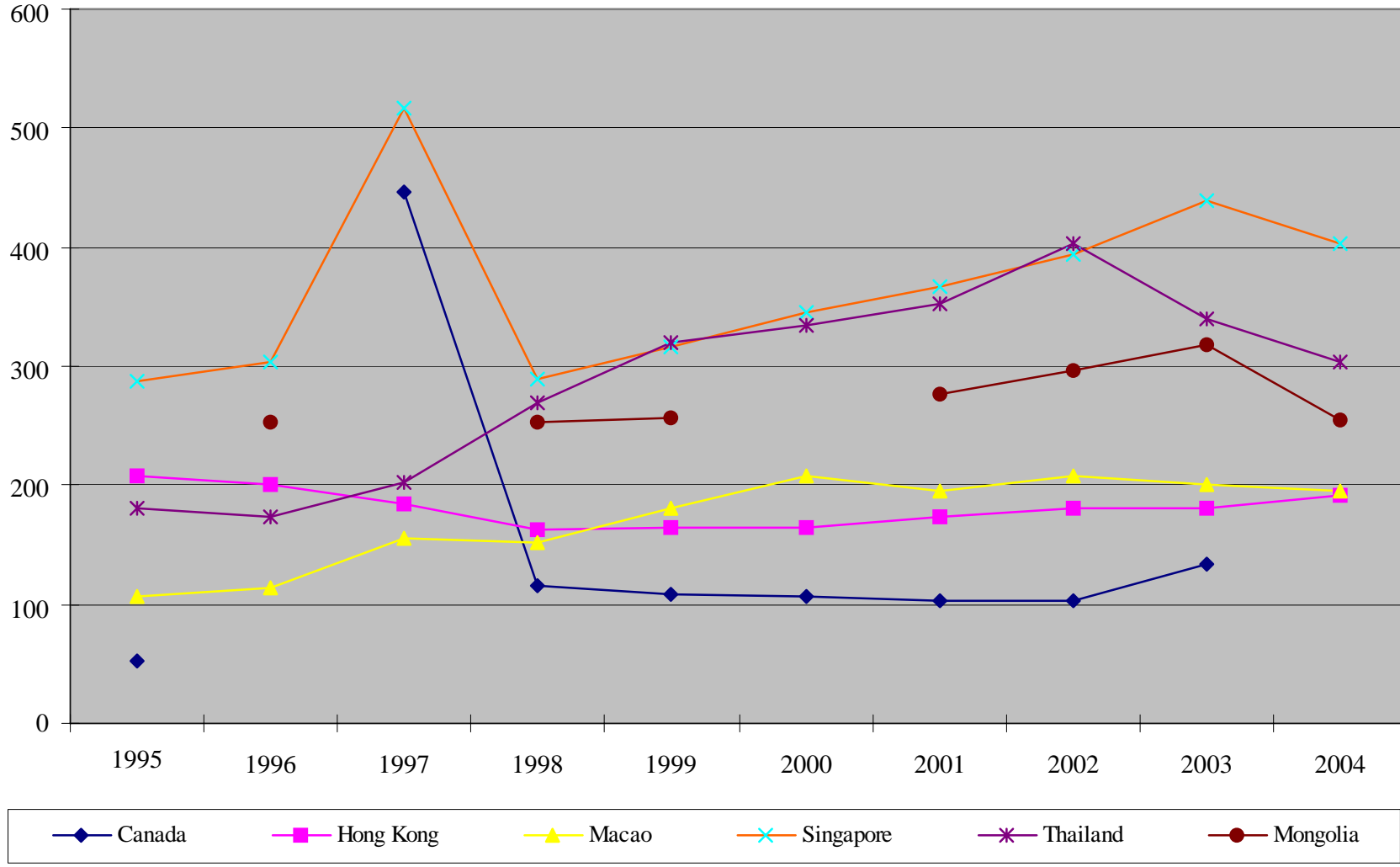
-per 100,000 of the general population

Imprisonment Rate of Asia and the Pacific (1995-2004) - Chart 1D



-per 100,000 of the general population

Imprisonment Rate of Asia and the Pacific (1995-2004) - Chart 1E



-per 100,000 of the general population

Correctional Statistics for Asia and the Pacific 2004

Trend of Remand Rate (1995 - 2004)

Country	1995	1996	1997	1998	1999	2000	2001	2002	2003	2004
Australia		12.8	13.8	14.8	16.9	19.8	22.3	22.2	24.5	25.7
Cambodia	10.1	10.1	9.1	10.5	13	16.4	15.9	17	16.1	17.7
Canada				19.1	21	21.4	21.9		35.8	
Hong Kong	20.7	19.9	18.6	18.1	14.3	16.1	18.7	19	20.3	21.6
India	16.4	17.5	18.2	18.4		20.3				

Country	1995	1996	1997	1998	1999	2000	2001	2002	2003	2004
Bangladesh	23.8			---	---	---				
Brunei Darussalam	12	8.6		13.4	8.7	9.5	6.0	12.3	4.3	11.6
Cook Islands	20					13.3		14.7	4.8	
Fiji	8.2	10.2	8.4	5.7	9	8.1	20.6	13.8	17.4	13.5
Indonesia		8	6.2	9.5	11	10	10.4		14.6	

Country	1995	1996	1997	1998	1999	2000	2001	2002	2003	2004
Philippines	3.1	3.2	2.9	3.1	2.2					
Solomon Islands	2.4	4.5	5.5	7.4	10					13.7
Pakistan (State of Jammu and Kashmir)									1.7	
Tonga								9	5.9	1
Vanuatu	7.9				4.9			3	4	

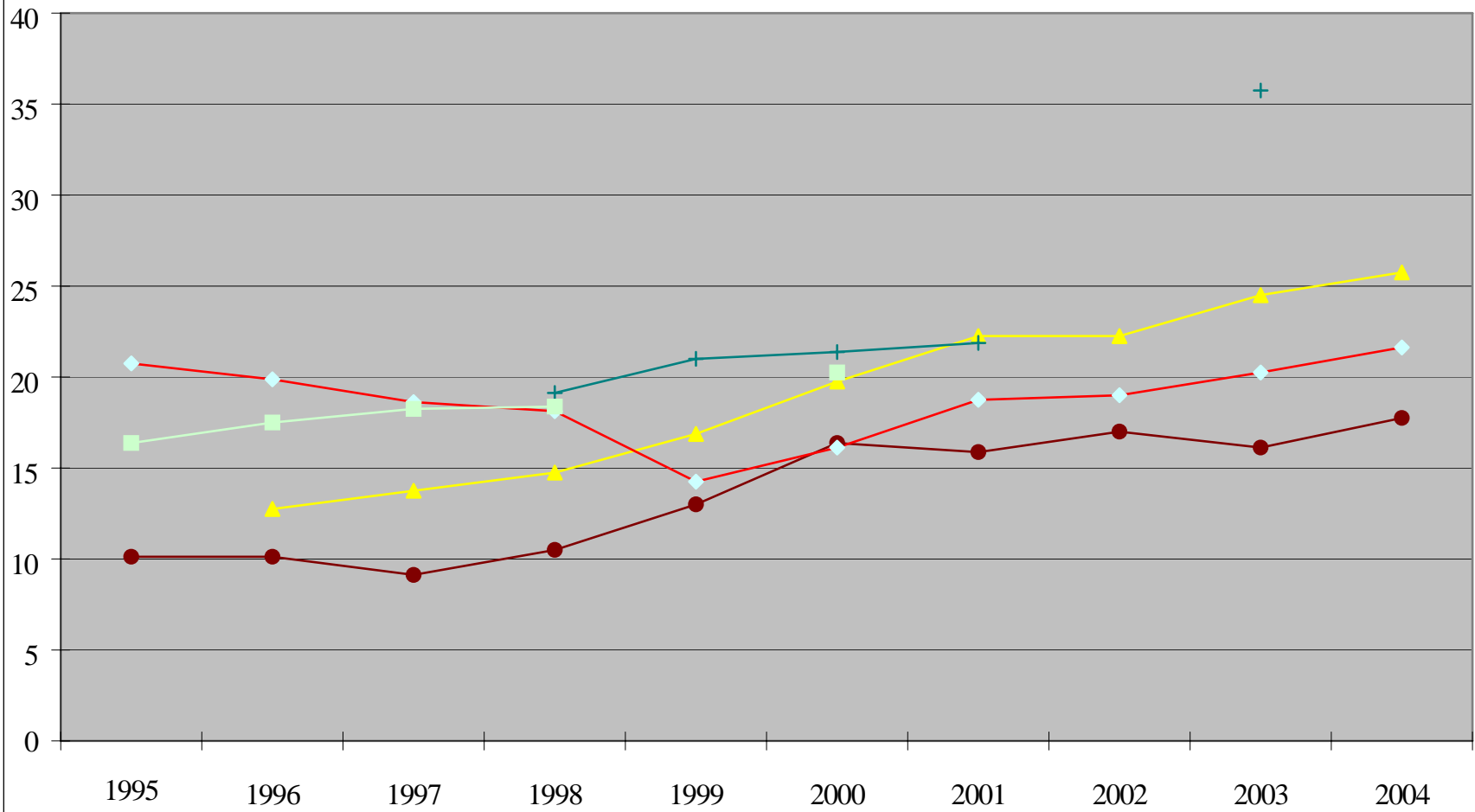
Country	1995	1996	1997	1998	1999	2000	2001	2002	2003	2004
Kiribati	17.1					9	7.1	2.4	8.3	5.9
New Zealand	15.3	13.9	16.3	18	18.8	19.6	23.3	24.8		31.4
Papua New Guinea		28.8		28.1	28.1		31.4	23.6		
Samoa	11.5									

Trend of Remand Rate (1995 - 2004)

Country	1995	1996	1997	1998	1999	2000	2001	2002	2003	2004
Japan	6.8	7	7.1	7.3	8.3	8.7	9.3	9.4	9.5	
Malaysia	26.6	33.5	28.1	31.8	35.9	31	36.7	36.5	48.6	68
Singapore	12.5	14.3	56.7	58.9	14.6	57.8	43.0	46.5	27.7	35.8
Sri Lanka			40.8	44.9	47.5	43.3	54.3	54.7	54.2	51.9

Country	1995	1996	1997	1998	1999	2000	2001	2002	2003	2004
Korea	61.9	64.7	49.1	71.6	62.8	52.5	51.2	48.7	45.3	45
Macao	38	32.8	48.4	43.6	43.2	59.9	42.3	36.2	21.6	21.6
Mongolia									63.7	43.6
Thailand	59.8	59	40.8	41.8	82.2	129.9	137.9	138.8	89.7	66.1

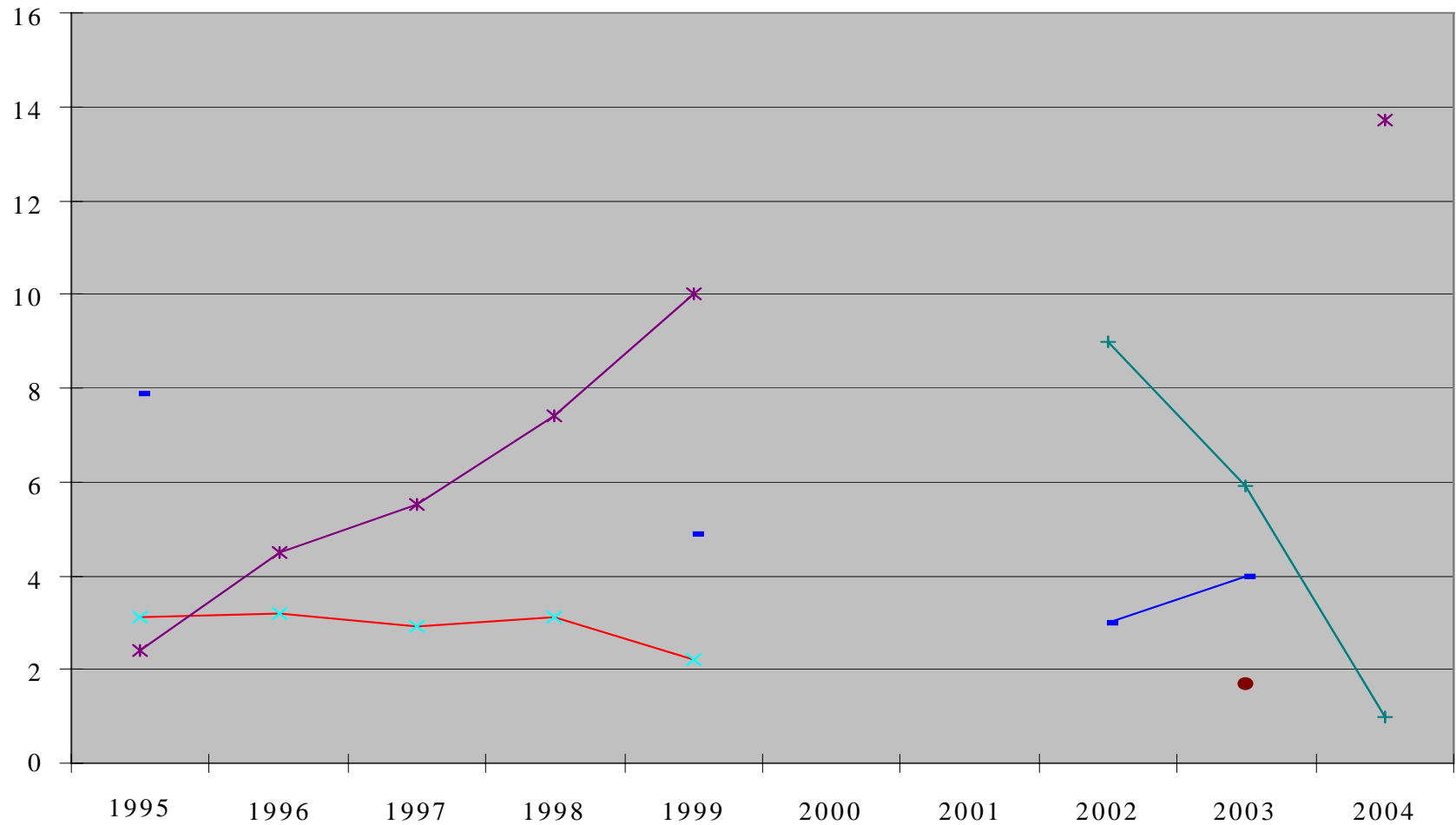
Remand Rate of Asia and the Pacific (1995-2004) - Chart 2A



▲ Australia ● Cambodia + Canada ◆ Hong Kong ■ India

-per 100,000 of the general population

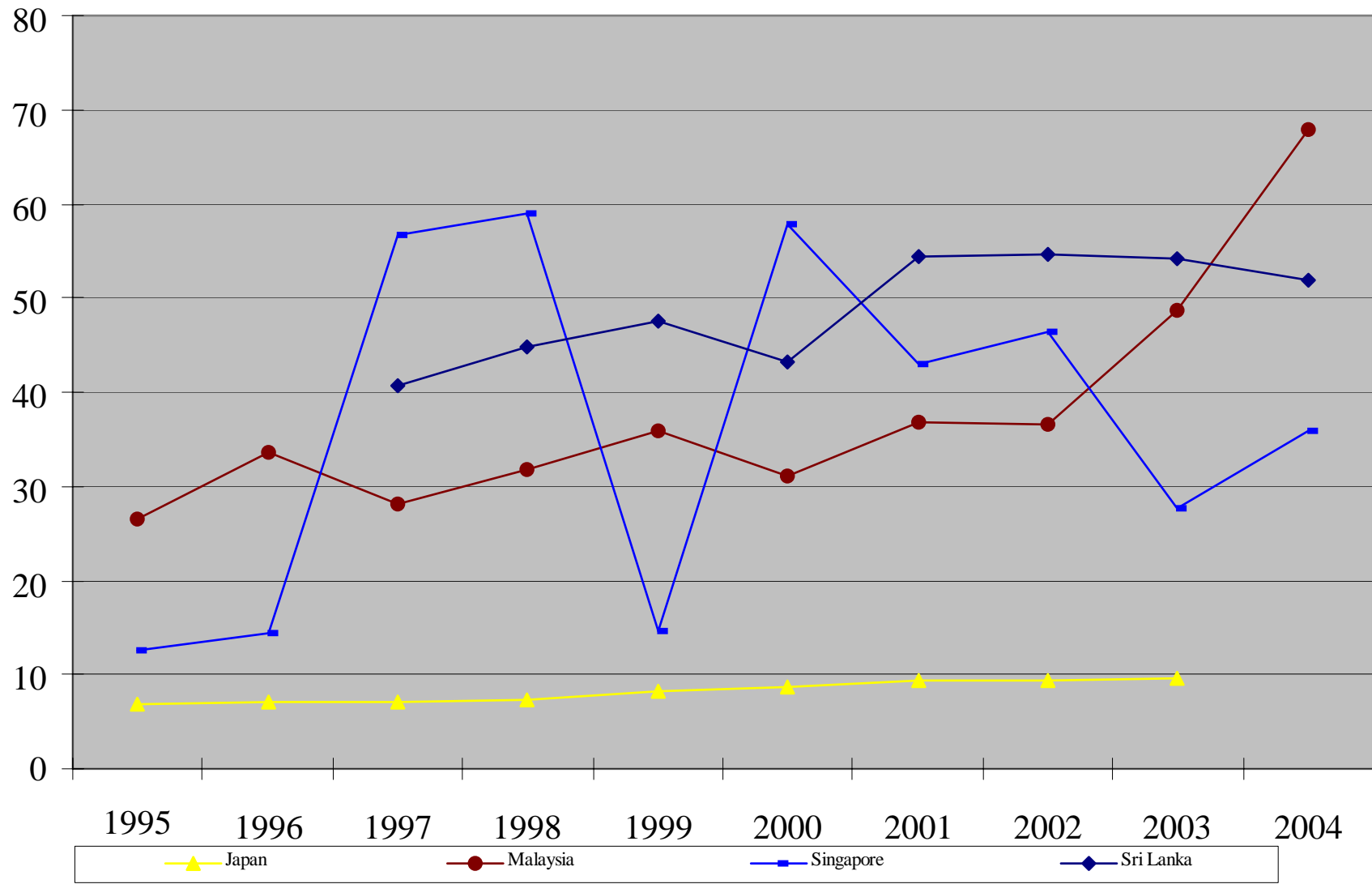
Remand Rate of Asia and the Pacific (1995-2004) - Chart 2B



—x— Philippines —*— Solomon Islands —●— Pakistan (State of Jammu and Kashmir) —+— Tonga —■— Vanuatu

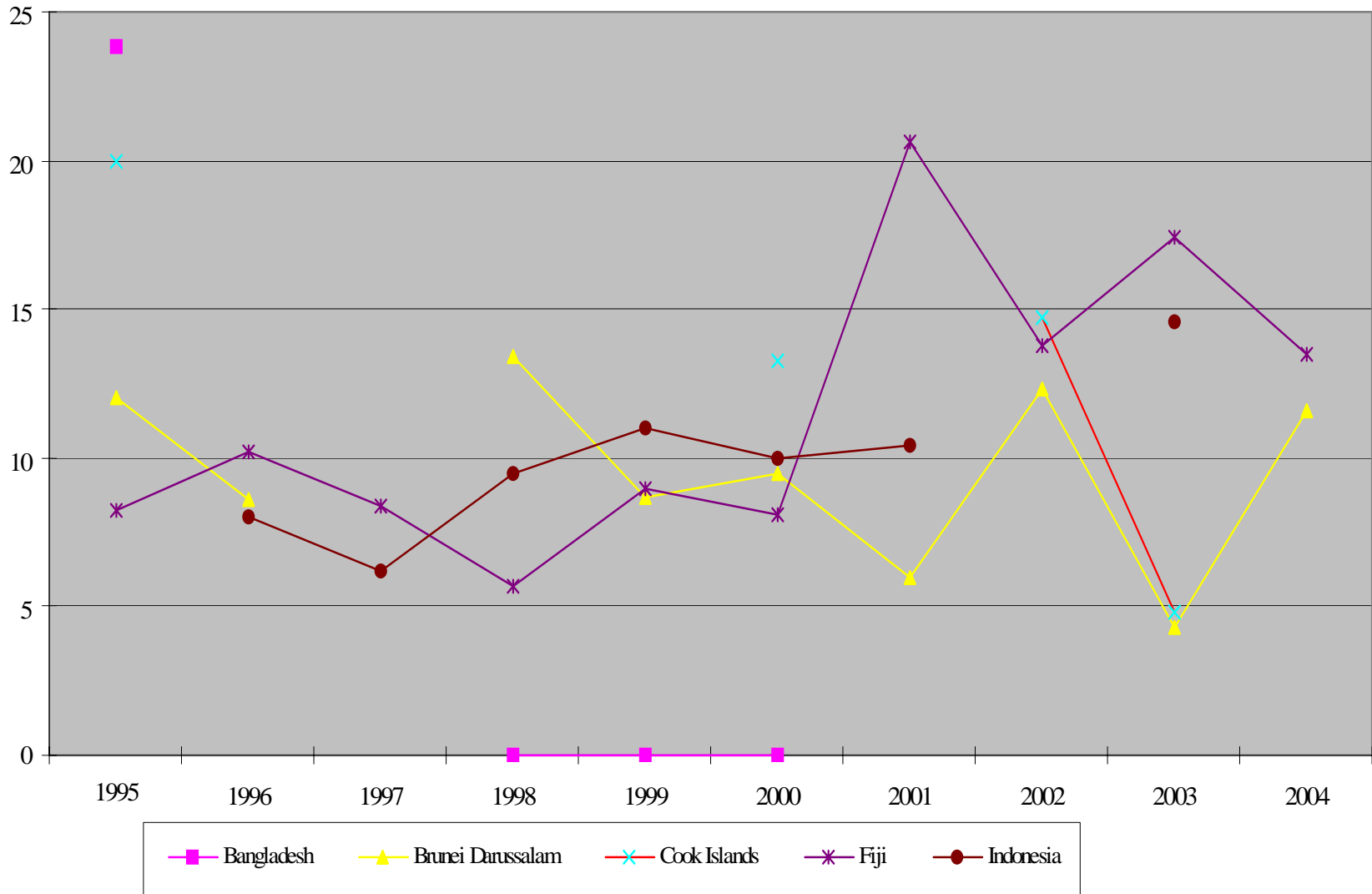
-per 100,000 of the general population

Remand Rate of Asia and the Pacific (1995-2004) - Chart 2C



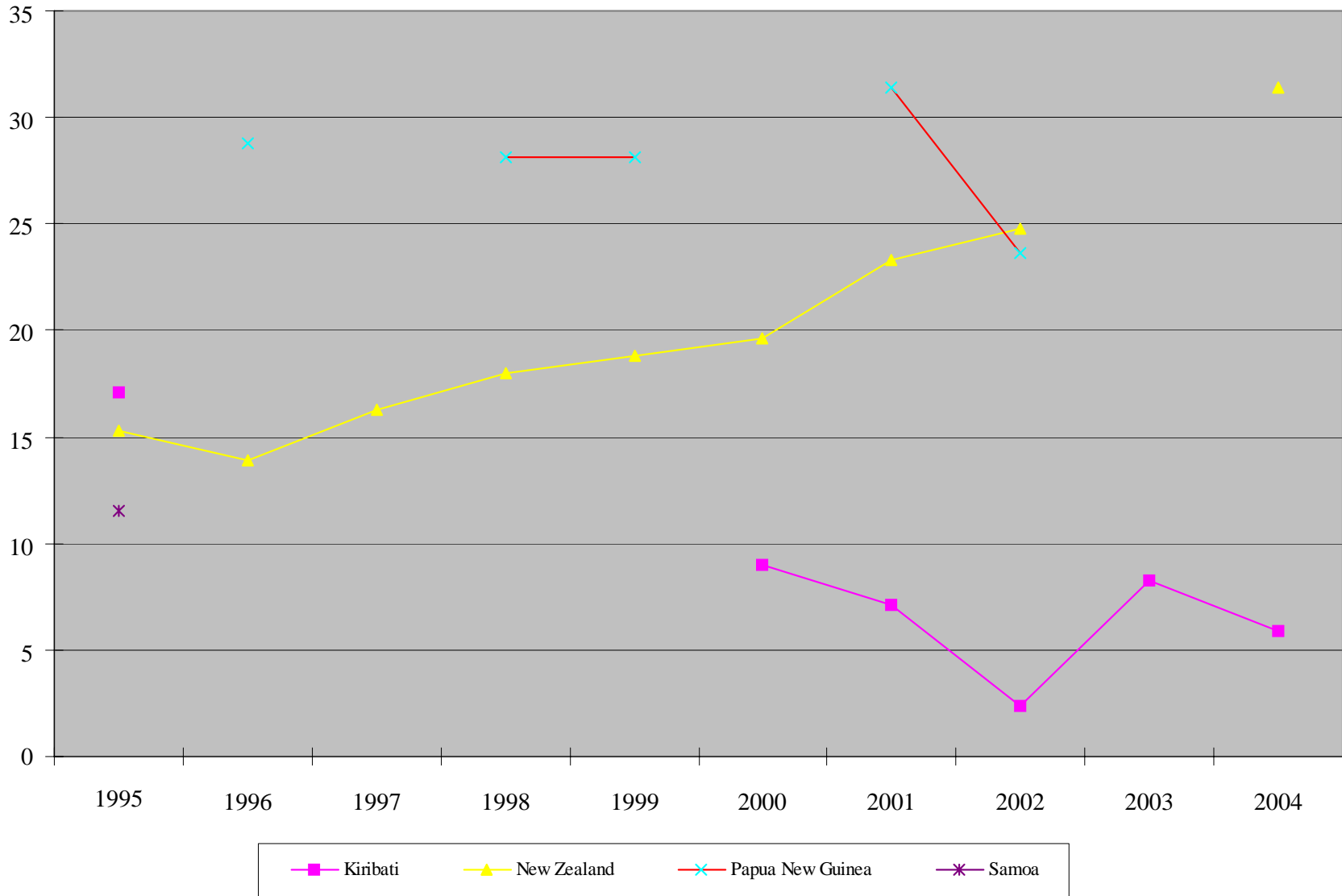
-per 100,000 of the general population

Remand Rate of Asia and the Pacific (1995-2004) - Chart 2D



-per 100,000 of the general population

Remand Rate of Asia and the Pacific (1995-2004) - Chart 2E



-per 100,000 of the general population

Remand Rate of Asia and the Pacific (1995-2004) - Chart 2F



-per 100,000 of the general population

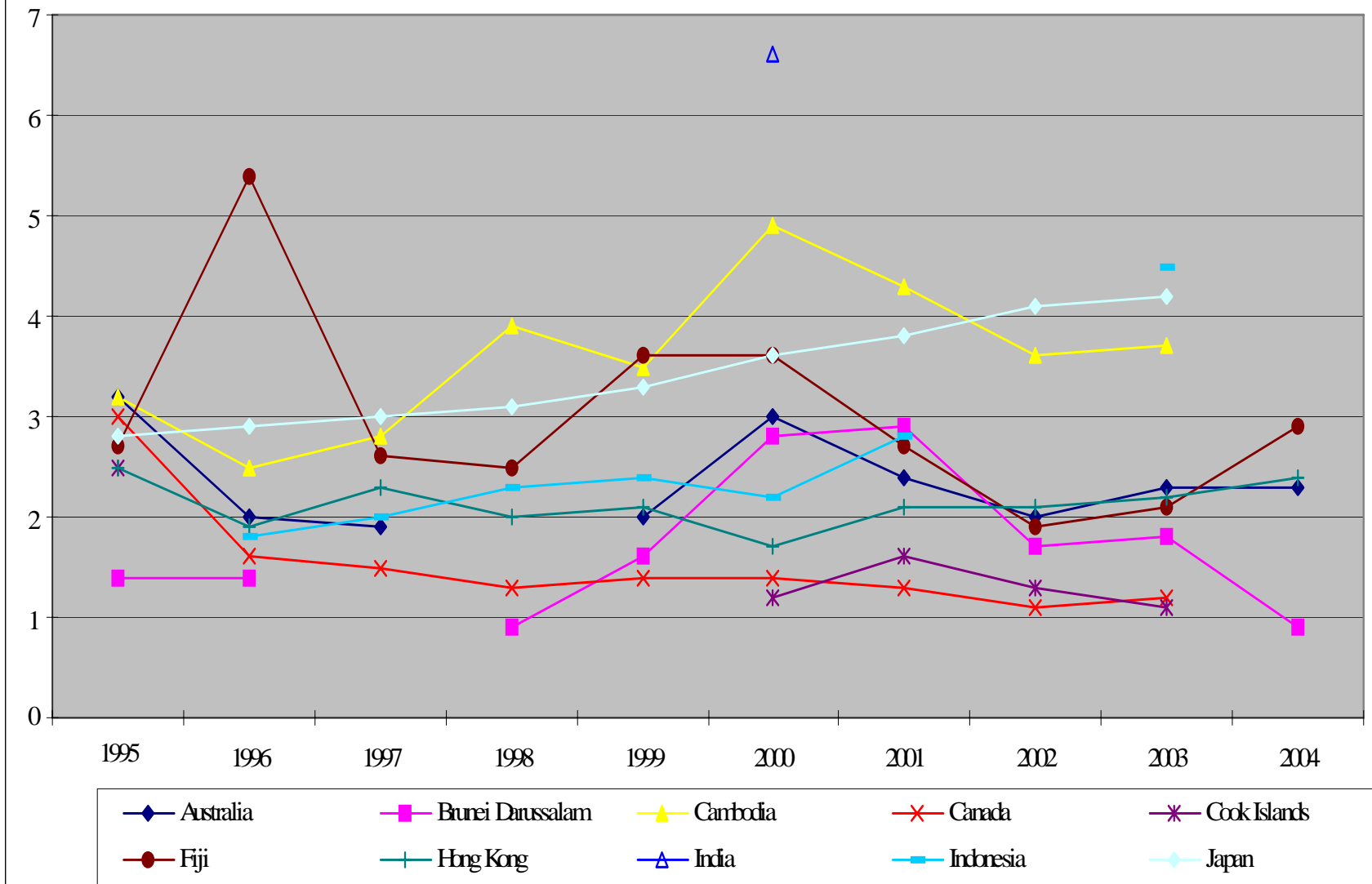
Staff vs Inmate Ratio

	1995	1996	1997	1998	1999	2000	2001	2002	2003	2004
Australia	3.2	2.0	1.9		2	3.0	2.4	2.0	2.3	2.3
Brunei Darussalam	1.4	1.4		0.9	1.6	2.8	2.9	1.7	1.8	0.9
Cambodia	3.2	2.5	2.8	3.9	3.5	4.9	4.3	3.6	3.7	
Canada	3.0	1.6	1.5	1.3	1.4	1.4	1.3	1.1	1.2	
Cook Islands	2.5					1.2	1.6	1.3	1.1	
Fiji	2.7	5.4	2.6	2.5	3.6	3.6	2.7	1.9	2.1	2.9
Hong Kong	2.5	1.9	2.3	2	2.1	1.7	2.1	2.1	2.2	2.4
India						6.6				
Indonesia		1.8	2	2.3	2.4	2.2	2.8		4.5	
Japan	2.8	2.9	3	3.1	3.3	3.6	3.8	4.1	4.2	
Laos										7.0

	1995	1996	1997	1998	1999	2000	2001	2002	2003	2004
Kiribati	3.4					1.6	2.1	2.1	2.2	2.8
Macao	1.9	1.5	2	2.1	1.7	2.4	1.8	1.9	1.8	1.8
Malaysia	2.6	2.8	2.8	3.5	3.2	2.9	3.0	3.1	4.1	3.7
Mongolia		5.2		5.8	4.9		4.8	4.0	5.6	3.6
Nepal										
New Zealand	2.0	1.9	2.1	2.1	9	2.1	2.1	2.2	2.4	2.2
Papua New Guinea		3.4					2.3	2.6		
Sri Lanka			3.6	3.3	4	3.3	3.8	3.7	4.3	4.6
Pakistan (State of Jammu and Kashmir)									2.8	
Tonga						0.8	1.4	1.3	1.5	1.7
Vanuatu	2.5				1.5			2.8	2.9	

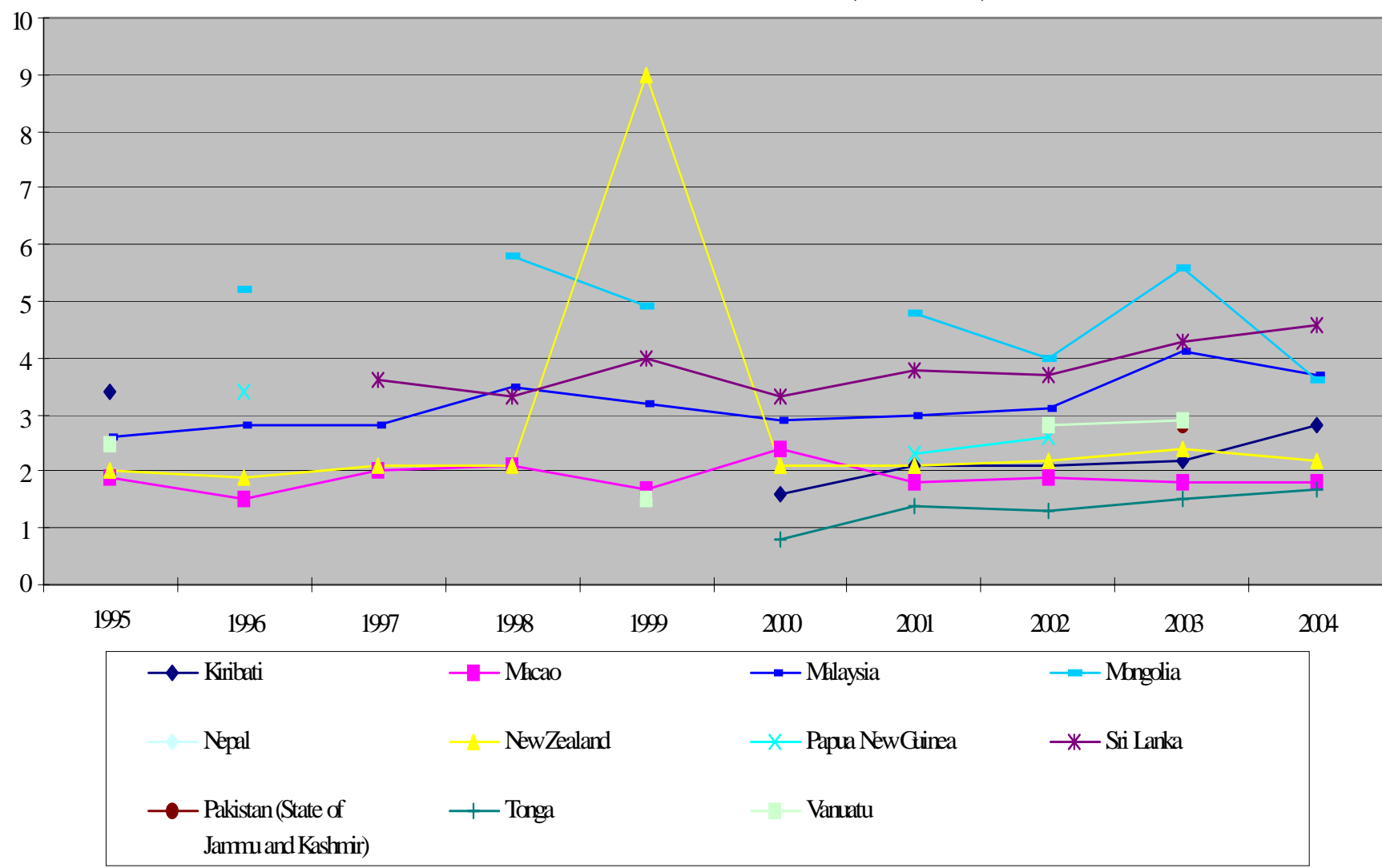
	1995	1996	1997	1998	1999	2000	2001	2002	2003	2004
Bangladesh	7.1									
China	4.8	4.7	5	5.1		5.0	5.7	5.3	5.4	5.5
Korea	5.7	5.1	4.7	6	5.9	5.3	5.1	5.0	4.8	4.7
Laos										0.8
Philippines	12.1	7.7	8.2	8.8	9		10.0	10.3	11.3	
Singapore	6.5	10.7	9	6.7	5.7		7.5	8.8	7.9	9.2
Solomon Islands	1.8	0.8	0.7	0.6	0.8					15.3
Thailand	11.8	10.2	12.7	16.2	19.2	20.4	21.4	25.4	20.5	18.3
Vietnam		7.2								
Samoa	6.5			4.9	4.9					

Total Staff to Inmate Ratio of Asia and the Pacific (1995-2004) - Chart 3A



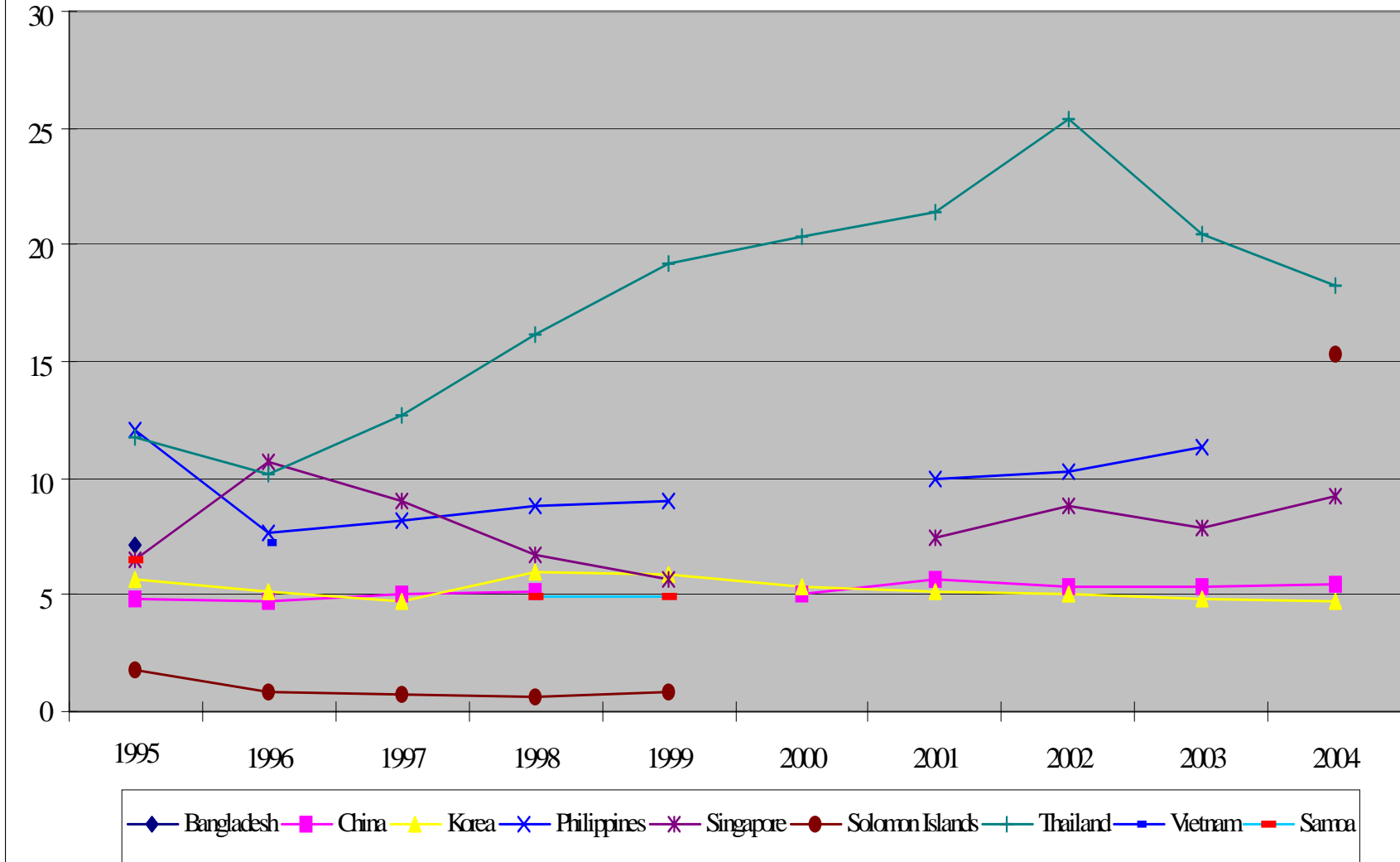
- It is suggested that all categories of staff in prisons be included, but those working in headquarters and training colleges be excluded.

Total Staff to Inmate Ratio of Asia and the Pacific (1995-2004) - Chart 3B



- It is suggested that all categories of staff in prisons be included, but those working in headquarters and training colleges be excluded.

Total Staff to Inmate Ratio of Asia and the Pacific (1995-2004) - Chart 3C



- It is suggested that all categories of staff in prisons be included, but those working in headquarters and training colleges be excluded.
 - Excluding 591 staff in Drug Rehabilitation Centres in Singapore in 1996.

Trend of Probation Rate

Country	1995	1996	1997	1998	1999	2000	2001	2002	2003
Cambodia	0.1		0.8						
Fiji		11.7	12.4	2.2	16.8	20.6	11.1	8.8	5.9
Indonesia			1.9	1.5	1.9	0.4	0.4		0.2
Japan	11.5	11.5	11.4	11.6	11.9	12.3	12.4	12.4	12.4
Kiribati									3.6
Macao	1.7		1	4.2	10.2			17.4	25.7
Singapore						0.9	1.5	5.4	
Pakistan (State of Jammu and Kashmir)									1.2

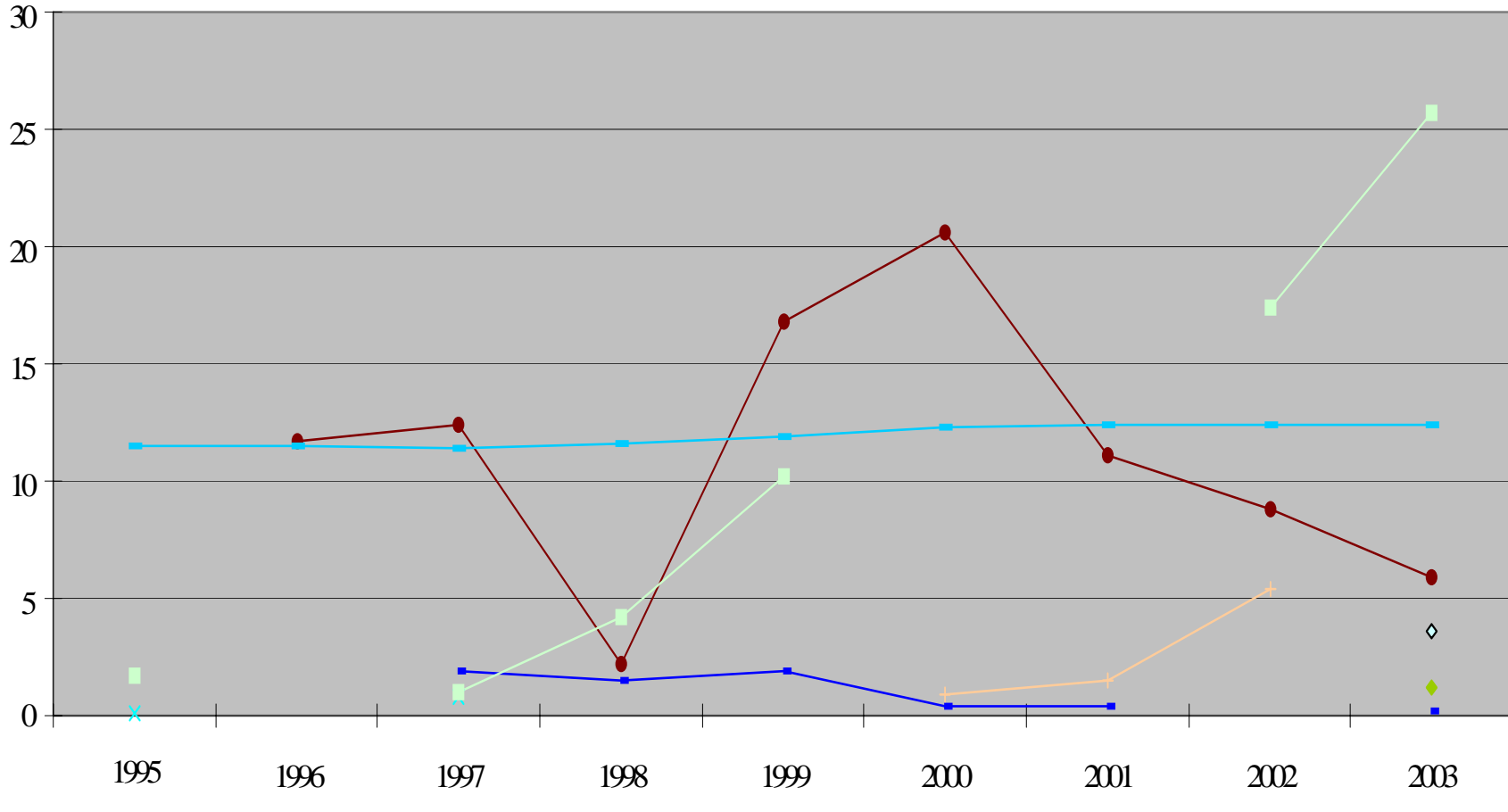
Trend of Probation Rate

Country	1995	1996	1997	1998	1999	2000	2001	2002	2003
Hong Kong	64	67	64	71.9	58	71	80.5	66	59.1
Korea			43.3	99.3	111.9	111.2	94.2	95.1	
Philippines	27.9	32.7	37.9	40.6	45.5			53	
Samoa	35.8								

Trend of Probation Rate

Country	1995	1996	1997	1998	1999	2000	2001	2002	2003
Australia	151.6	166.6	163.1		218.7	211.6	221.6	227.4	204.9
Canada				330.7	350.5	367.8	370.7	327.9	480.2
Cook Islands	445					26.7	60		
New Zealand	618.2	585.6	579.8	607.0	581.5	464.9	457.5	410.2	524.9
Thailand	112.2	496.6	192.4	296.3	839.8	214	1229	163.3	833.9

Probation Rate of Asia and the Pacific (1995-2003) - Chart 4A

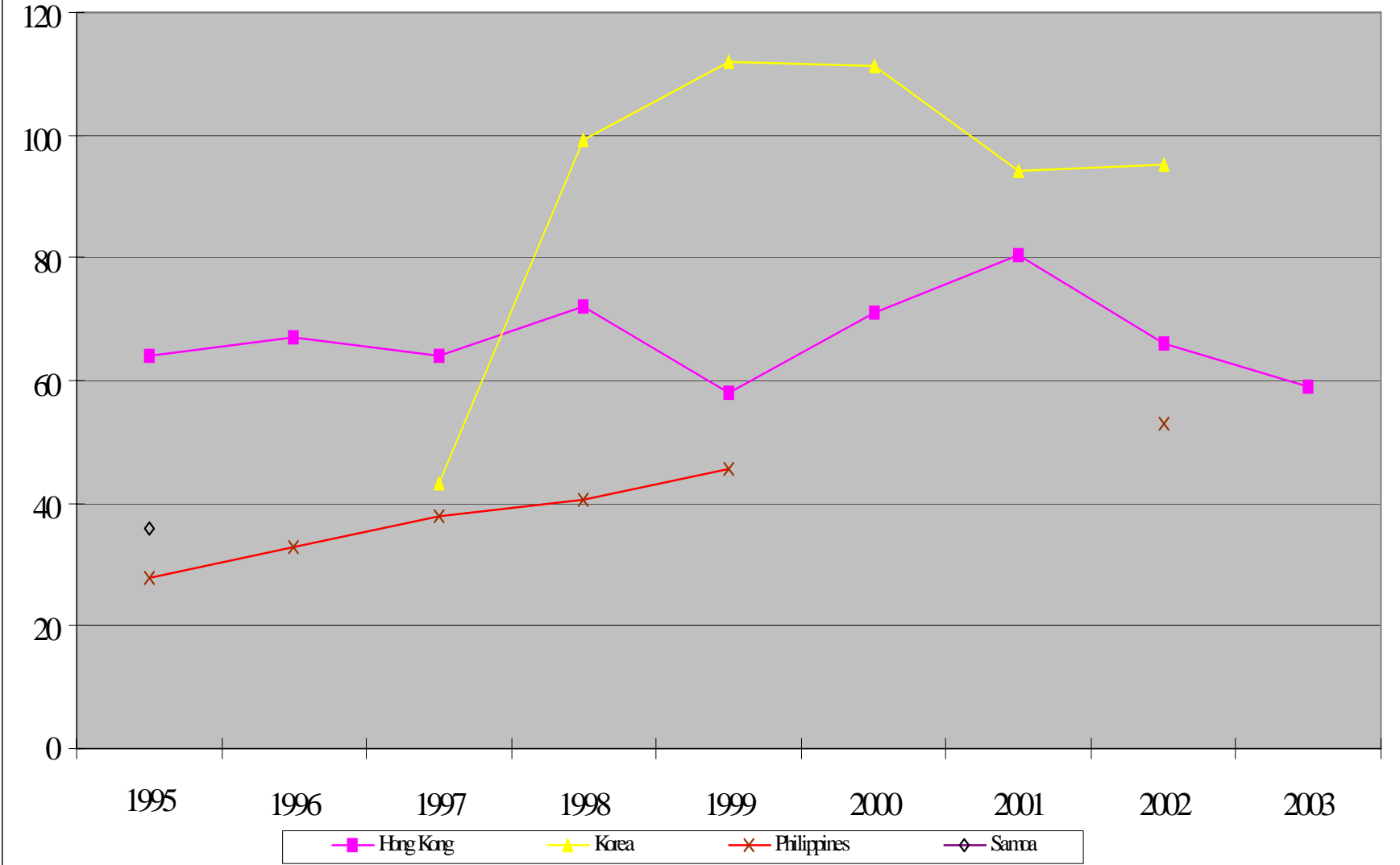


x Cambodia
 ● Fiji
 ■ Indonesia
 ■ Japan
 ◇ Kiribati
 ■ Micao
 + Singapore
 ◆ Pakistan (State of Jammu and Kashmir)

(Persons serving community service orders are included)

-per 100,000 of the general population

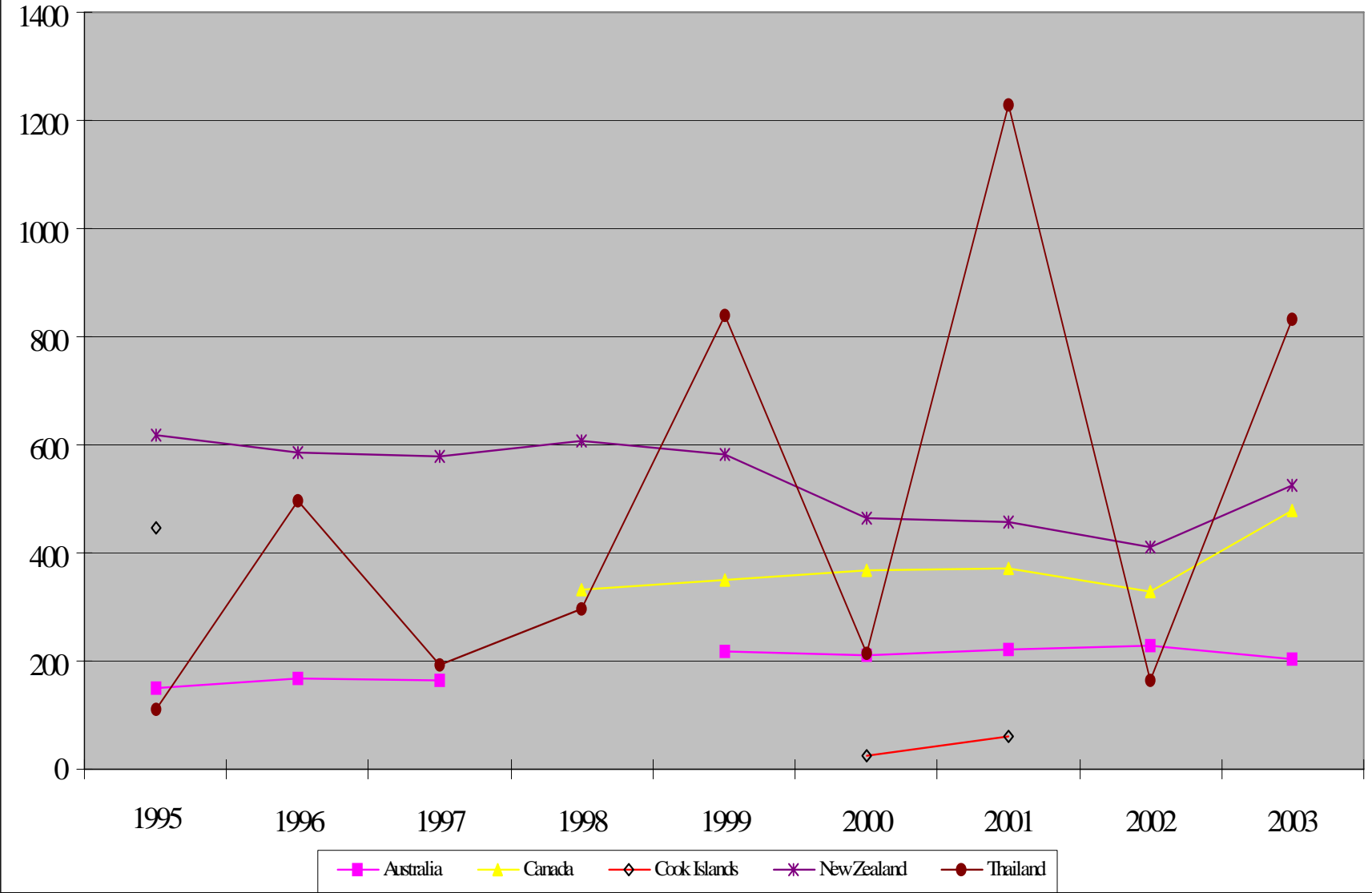
Probation Rate of Asia and the Pacific (1995-2003) - Chart 4B



(Persons serving community service orders are included)

-per 100,000 of the general population

Probation Rate of Asia and the Pacific (1995-2003) - Chart 4C



(Persons serving community service orders are included)
 -The Australian data in 1999 excluded WA and NT.

-per 100,000 of the general population

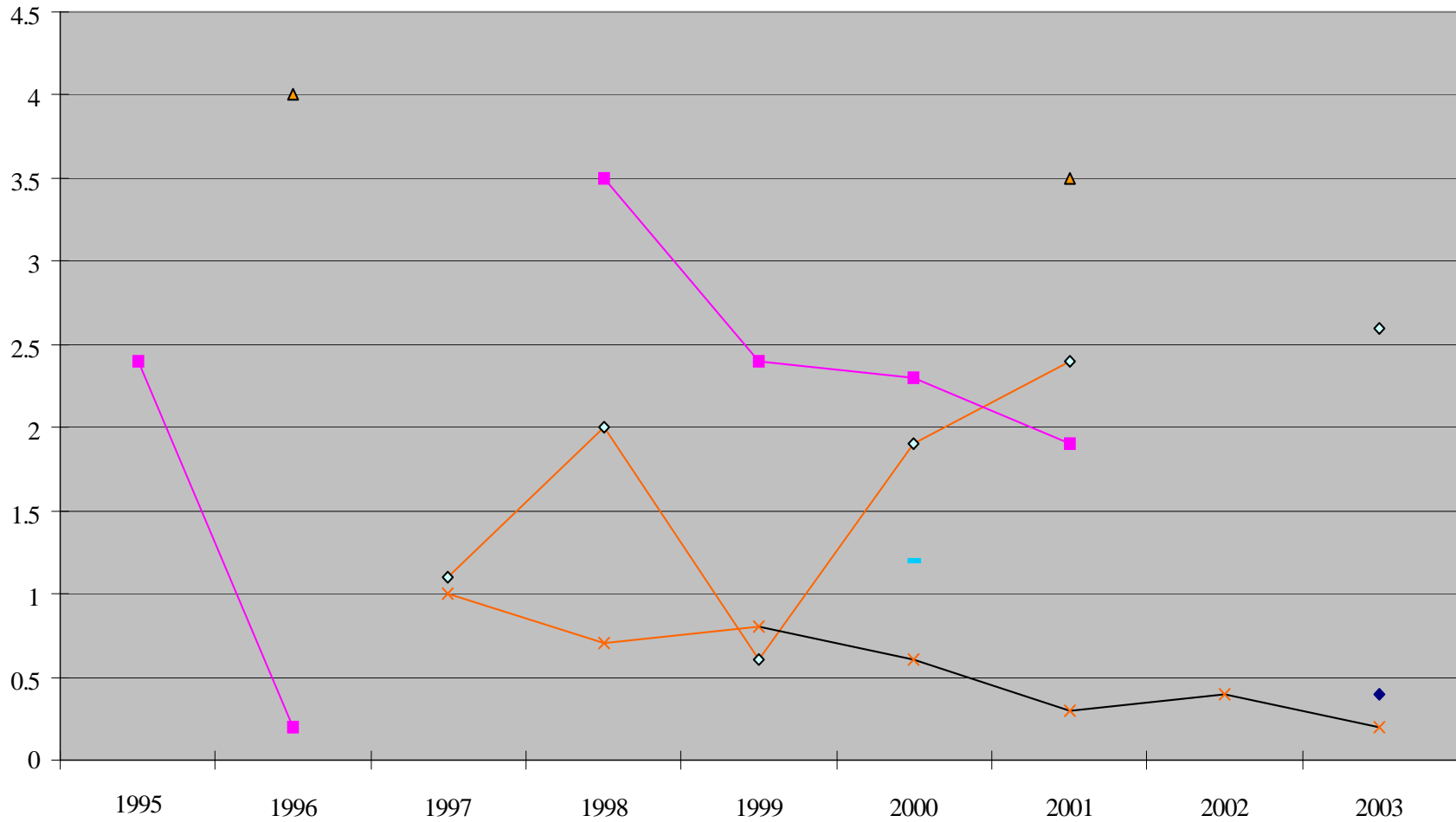
Trend of Parole Rate

Country	1995	1996	1997	1998	1999	2000	2001	2002	2003
Cook Islands	30					6.7			
Kiribati	5.7					5.1		28.4	40.2
Macao	6.8	6.6	13.7	20.9	25.3			15.1	
Mongolia		7.2							53.2

Trend of Parole Rate

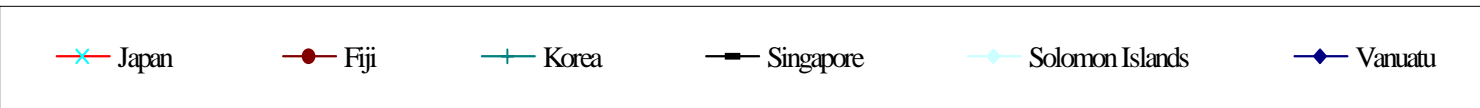
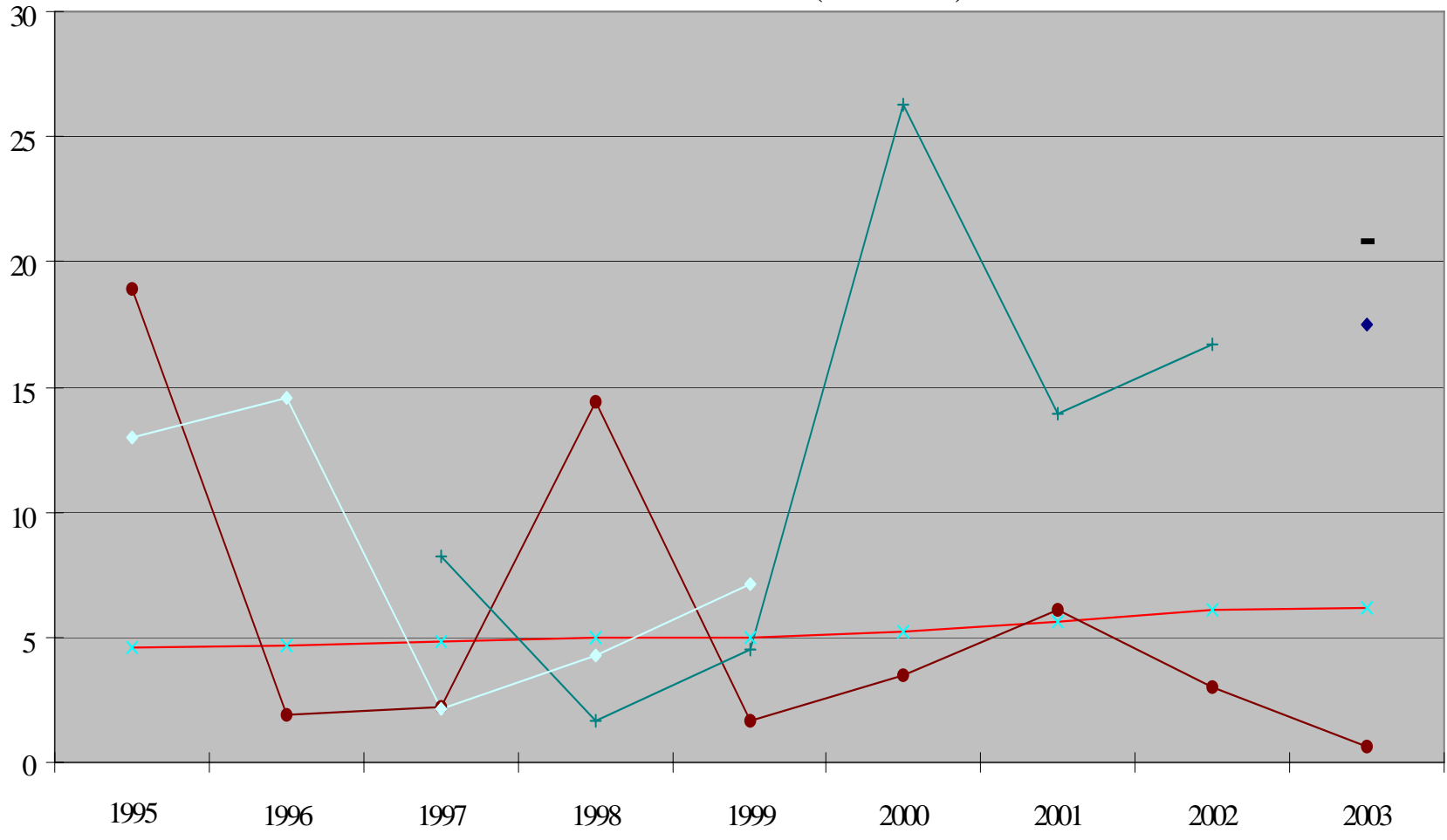
Country	1995	1996	1997	1998	1999	2000	2001	2002	2003
Australia	28.1	40.6	40.2		36.3	39.7	47.7	44.7	43.1
Canada	29.7		23.5	40.6	38.7	32.8	26.5	30.9	29.7
Philippines	14.7	15.2	16.4	19.2	20.6			25.5	79.4
Thailand	29.7	21.7	9.3	32.3	32.2	37.9	2.5	44.6	35.1

Parole Rate of Asia and the Pacific (1995-2003) - Chart 5A



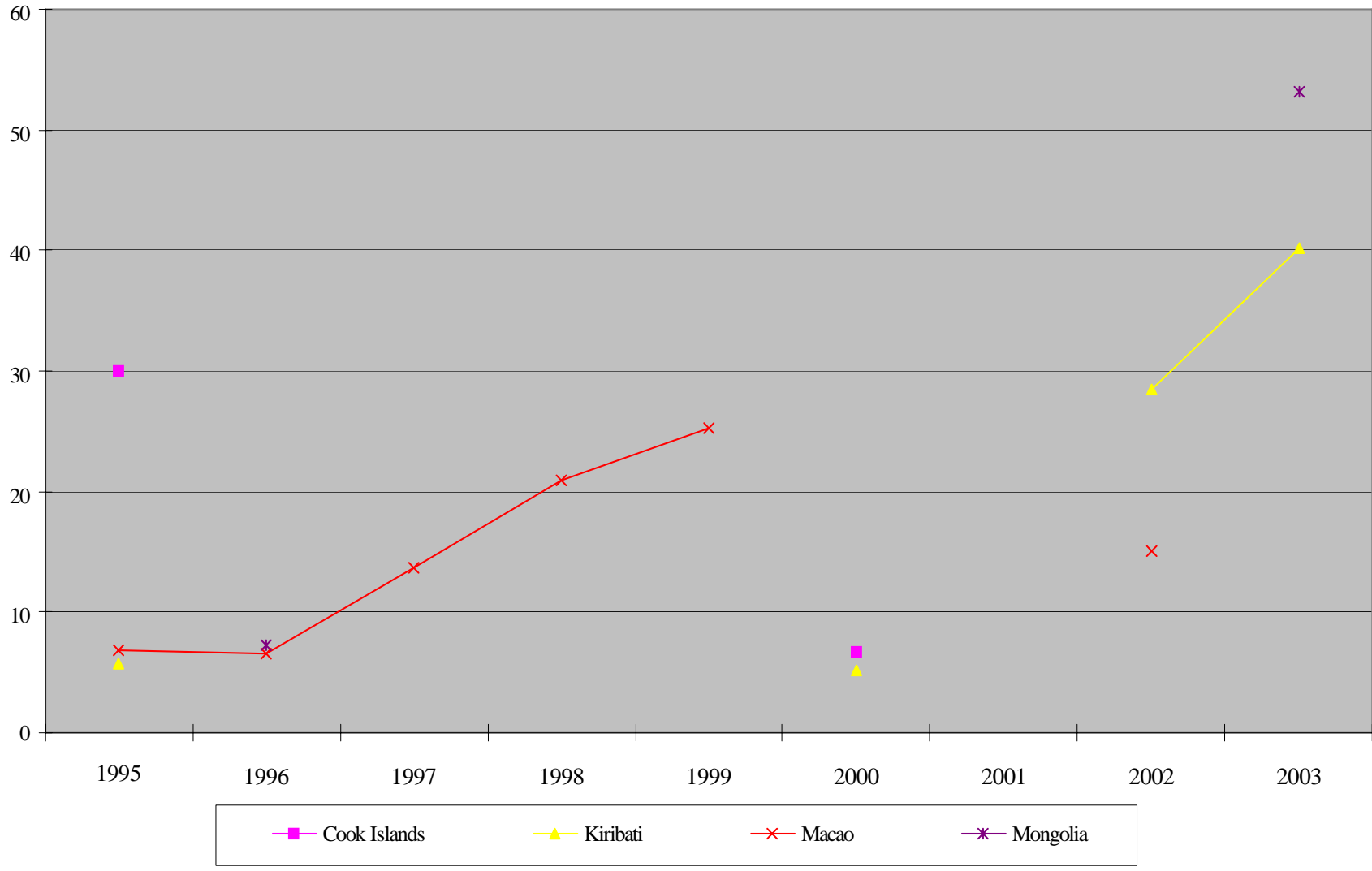
-per 100,000 of the general population

Parole Rate of Asia and the Pacific (1995-2003) - Chart 5B



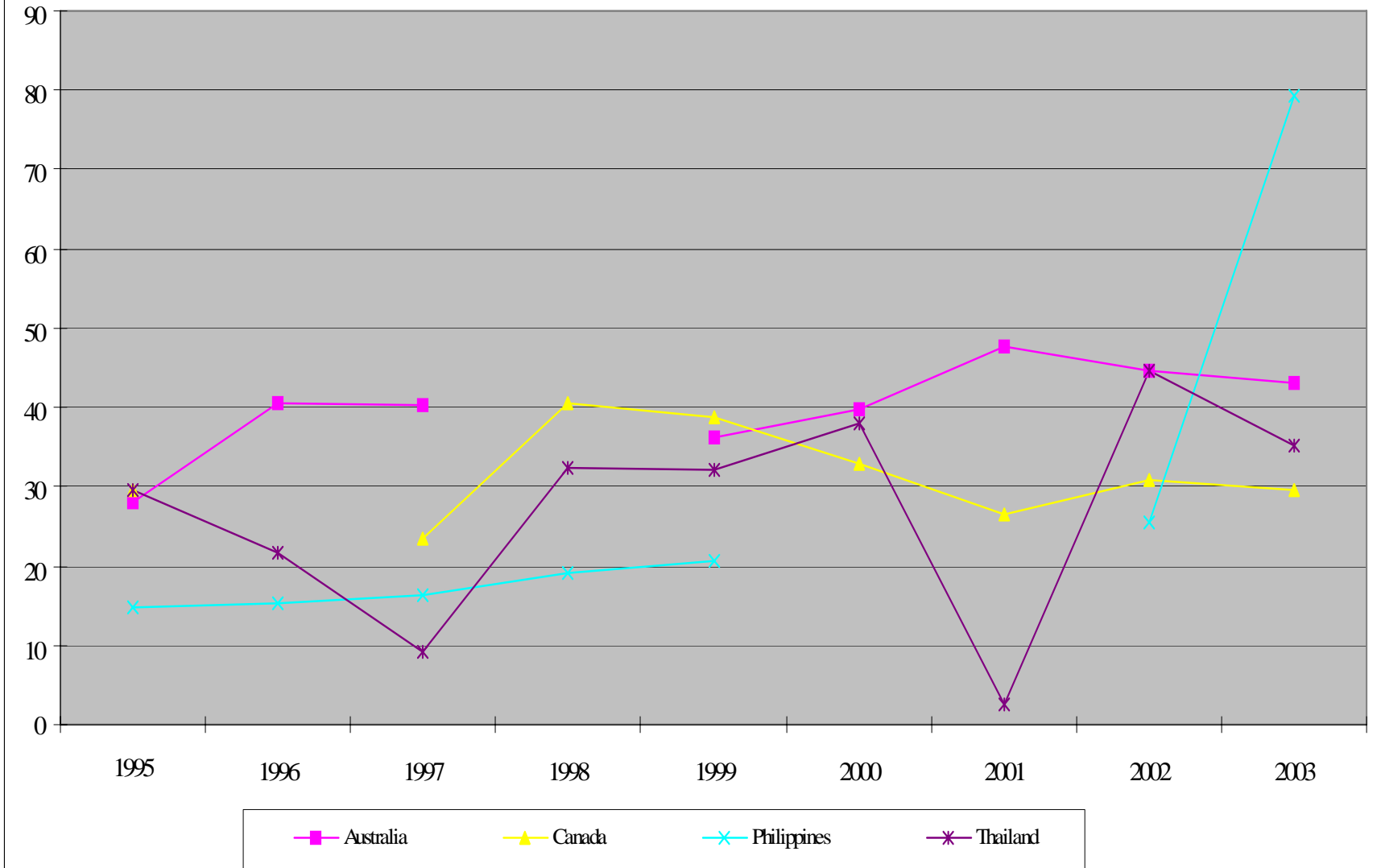
-per 100,000 of the general population

Parole Rate of Asia and the Pacific (1995-2003) - Chart 5C



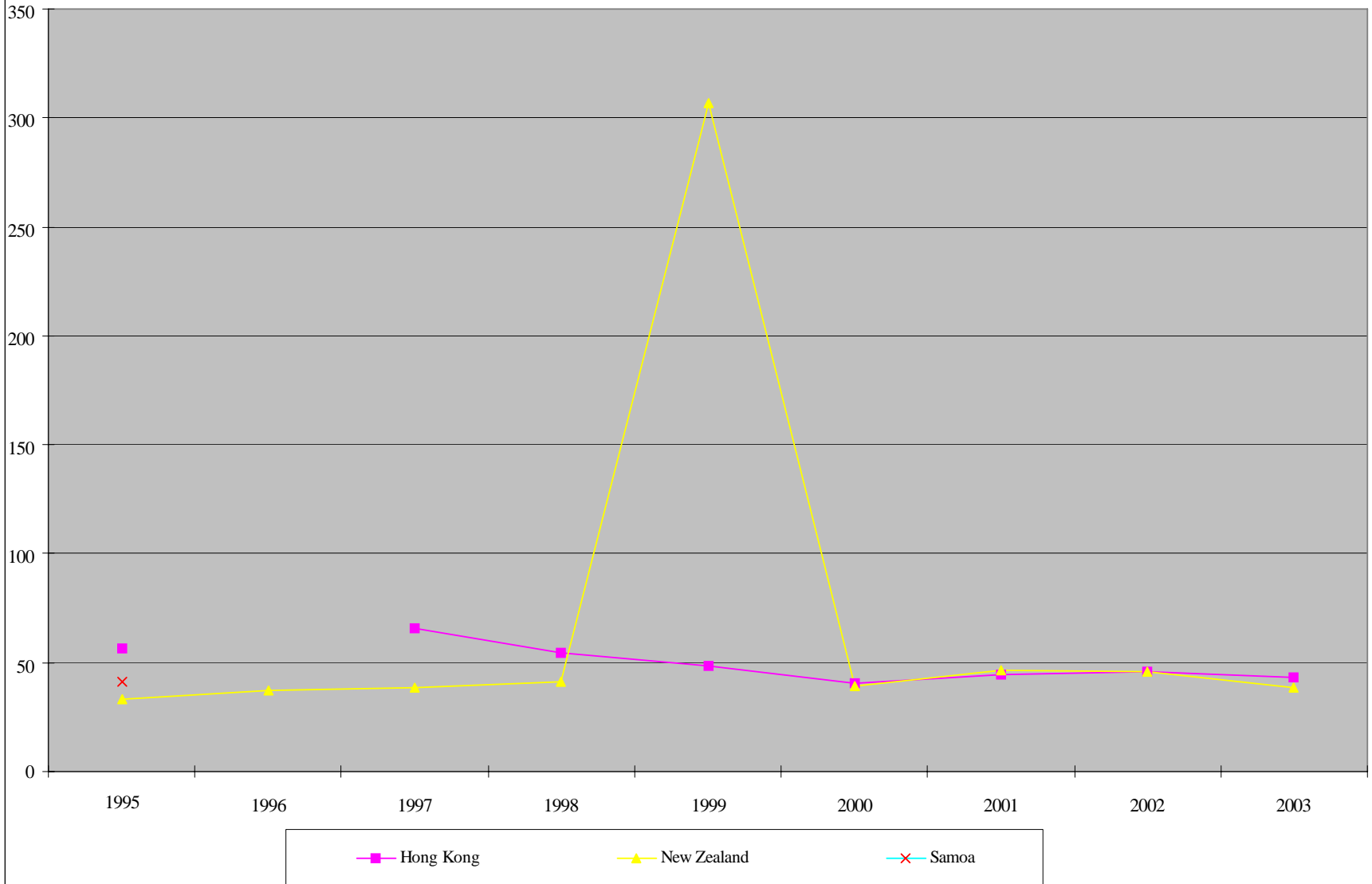
-per 100,000 of the general population

Parole Rate of Asia and the Pacific (1995-2003) - Chart 5D



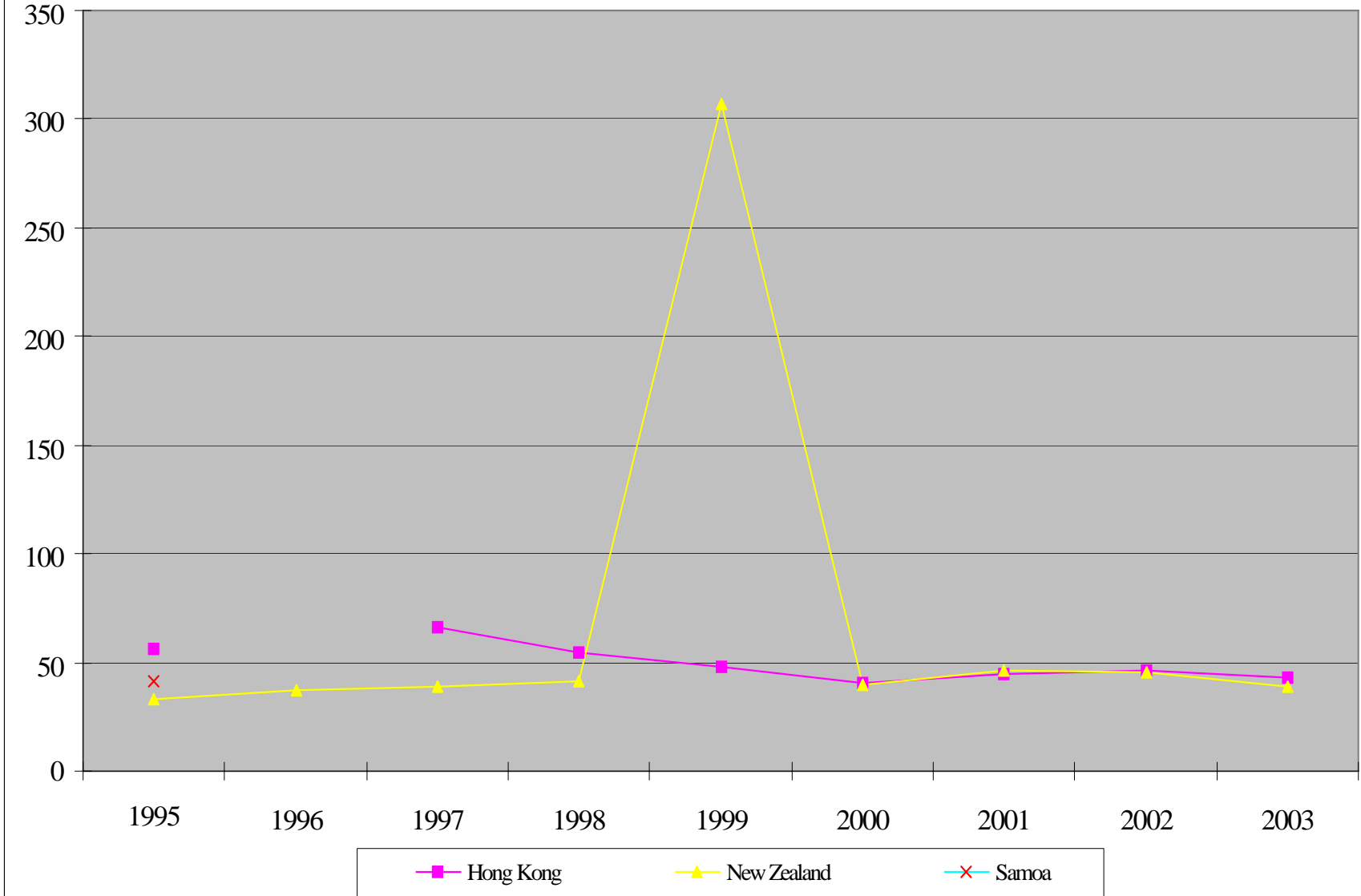
-per 100,000 of the general population

Parole Rate of Asia and the Pacific (1995-2003) - Chart 5E



-per 100,000 of the general population

Parole Rate of Asia and the Pacific (1995-2003) - Chart 5F



-per 100,000 of the general population

