

## Appendix B

### Correctional Statistics for Asia and the Pacific 2005

Table 1: Prisoners by Gender and Imprisonment Rates, mid 2005

Country/Area	Male	Female	Total	General Population('000)	Imprisonment rate (per 100000 population)	% of foreign nationals/non-locals
Australia	22461	1691	24152	20229.786	119.4	26 <sup>1</sup>
Brunei Darussalam	449	37	492	357.8	137.5	22.8
Cambodia	7660	500	8160	12100	67.4	2.7
Canada <sup>2</sup>	30224	1589	32009 <sup>3</sup>	31660.466	101.1	---
Fiji	1090	23	1113	850	130.9	0.9
Hong Kong (China)	9868	2476	12162	6888.8	176.5	35.8
Indonesia	95290	4656	99946	217072.346	46.0	0.4
Japan <sup>4</sup>	71868	4545	76413	127636	59.9	7.9
Kiribati	73	1	74	84.494	87.6	0.0
Korea	49826	3121	52947	46136.101	114.8	1.4
Macao (China)	812	82	894	465.3	192.1	40.6
Malaysia	33322	2322	35644	26000	137.1	29.5
Mongolia	6690	308	6998	2544.876	275.0	0.2
New Zealand	6607	422	7029	4097	171.6	---
Philippines	27907	1254	29161	76500	38.1	0.6
Singapore	13476	1649	15125	4240.3	356.7	19.7
Sri Lanka	22707	906	23613	19462	121.3	0.5
Thailand	136523	28452	164975	62061	265.8	25.0
Vanautu	132	6	138	200	69.0	---
Vietnam	77424	10990	88414	82069	107.7	0.2

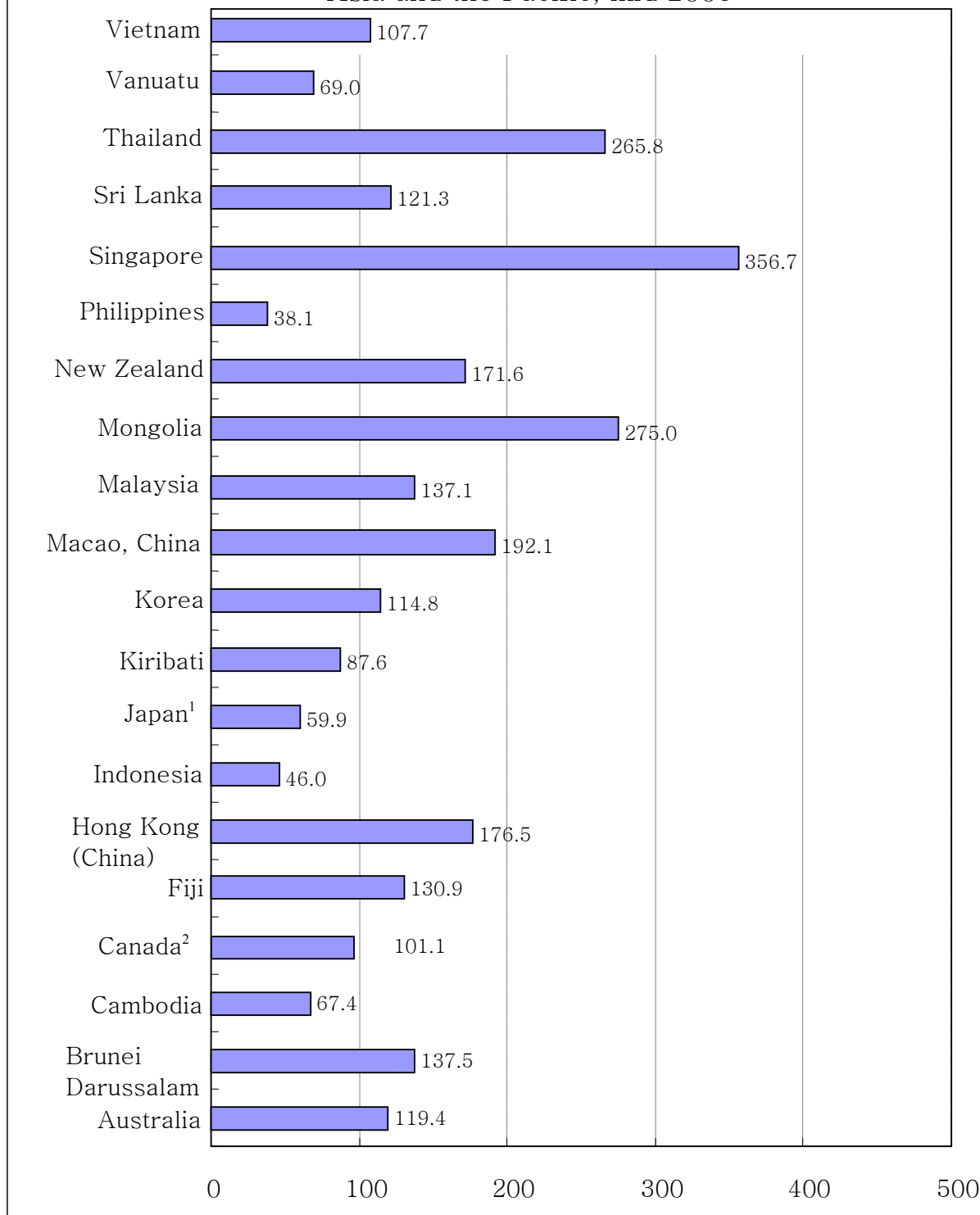
<sup>1</sup> refers to 30.6.2004

<sup>2</sup> refers to 2003-2004

<sup>3</sup> plus 196 gender not stated

<sup>4</sup> refers to 31.12.2004

Imprisonment Rate (per 100 000 population)  
Asia and the Pacific, mid 2005



<sup>1</sup> refers to 31.12.2004

<sup>2</sup> refers to 2003-2004

## Correctional Statistics for Asia and the Pacific 2005

**Table 2: Unconvicted Remandees, mid 2005**

Country/Area	Unconvicted remandees	% of remandees	Remand rate (per 100000 population)
Australia	5313	22.0	26.3
Brunei Darussalam	35	7.1	9.8
Cambodia	2434	29.8	20.1
Fiji	95	8.5	11.2
Hong Kong (China)	1452	11.9	21.1
Indonesia	41863	41.9	19.3
Japan <sup>1</sup>	11415	14.9	8.9
Kiribati	2	2.7	2.4
Korea	17526	33.1	38.0
Macao (China)	138	15.4	29.7
Malaysia	13352	37.5	51.4
Mongolia	1885	26.9	74.1
New Zealand	1265	18.0	30.9
Philippines	2533	8.7	3.3
Singapore	2979	8.9	70.3
Sri Lanka	11633	49.3	59.8
Thailand	41268	25.0	66.5
Vanuatu	26	18.8	13.0
Vietnam	---	---	---

---

<sup>1</sup> refers to 31.12.2004

## Correctional Statistics for Asia and Pacific 2005

**Table 3(a): Institutional Staff\* to Prisoner Ratio, mid 2005**

Country/Area	Total institutional staff	Institutional staff to prisoner ratio
Comodia	1689	1:4.8
Brunei Darussalam	481	1:1.0
Fiji	497	1:2.2
Hong Kong (China)	5448	1:2.2
Indonesia	24288	1:4.1
Japan <sup>1</sup>	17645	1:4.3
Kiribati	32	1:2.3
Korea	12700	1:4.2
Macao (China)	499	1:1.8
Malaysia	10661	1:3.3
Mongolia	2043	1:3.4
New Zealand	3327	1:2.1
Philippines	2363	1:12.3
Singapore	1902	1:8.0
Sri Lanka	4928	1:4.8
Thailand	---	---
Vanuatu	28	1:4.9
Vietnam	14363	1:6.2

---

\* 'Institutional Staff' refers to full time (or equivalent) staff working in prisons/correctional institutions, including all categories of staff in prisons/correctional institutions, but excluding those working in headquarters and training colleges.

<sup>1</sup> refers to 31.12.2004

## Correctional Statistics for Asia and the Pacific 2005

**Table 3(b): Custodial Staff\* to Prisoner Ratio, mid 2005**

Country/Area	Total institutional custodial staff	Custodial staff to prisoner ratio
Cambodia	1540	1:5.3
Brunei Darussalam	225	1:2.2
Fiji	317	1:3.5
Hong Kong (China)	4749	1:2.6
Indonesia	22632	1:4.4
Japan <sup>1</sup>	16739	1:4.6
Kiribati	32	1:2.3
Korea	11184	1:4.7
Macao (China)	389	1:2.3
Malaysia	10072	1:3.5
Mongolia	1133	1:6.2
New Zealand <sup>2</sup>	2593	1:2.7
Philippines	1439	1:20.3
Singapore	1723	1:8.8
Sri Lanka	4752	1:5.0
Thailand	1439	1:20.3
Vanautu	28	1:4.9
Vietnam	9003	1:9.8

<sup>1</sup> Includes not only security staff but also technical officers and academic instructors engaged in classification, of inmates, educations, etc. (refers to 31.12.2004)

<sup>2</sup> Figure includes Corrections Officers, Senior Corrections Officers, Principal Corrections Officers and Unit Managers

\* 'Custodial Staff' refers to full time (or equivalent) custodial staff working in prisons/correctional institutions who are involved in direct custodial inmate supervision (i.e., excluding other supporting staff like medical doctors, psychologists, teachers, clerical staff, civilian personal, etc.).

## Correctional Statistics for Asia and the Pacific 2005

**Table 4(a): Rate of Offenders Receiving Community-based Supervised Sentences\*, mid 2005**

Country/Area	Total number of offenders receiving community-based supervised sentences	Rate of offenders receiving community-based supervised sentence (per 100000 population)
Australia	42595	210.6
Brunei Darussalam	---	---
Cambodia	---	---
Fiji	---	---
Hong Kong (China)	4100	59.5
Indonesia	---	---
Japan <sup>1</sup>	15687	12.3
Kiribati	1	1.2
Korea	8674	18.8
Macao (China)	88	18.9
Malaysia	---	---
Mongolia	---	---
New Zealand <sup>2</sup>	18265	445.8
Philippines	---	---
Singapore	---	---
Sri Lanka	---	---
Thailand	---	---
Vanuatu	---	---
Vietnam	---	---

---

<sup>1</sup> refers to 31.12.2004

<sup>2</sup> Some offenders are serving more than one non-custodial sentence order

## Correctional Statistics for Asia and the Pacific 2005

**Table 4(b): Rate of Offenders Subject to Supervised Orders upon Release  
From a Custodial Sentence, mid 2005**

Country/Area	Total number of offenders subject to supervised orders upon release from a custodial sentence	Rate of offenders subject to supervised order upon release from a custodial sentence (per 100000 population)
Australia	10113	50.0
Brunei		
Darussalam	---	---
Cambodia	---	---
Fiji	---	---
Hong Kong (China)	447	6.4
Indonesia	1764	0.8
Japan <sup>1</sup>	8096	6.3
Kiribati	7	8.3
Korea	45063	97.7
Macao (China)	62	13.3
Malaysia	---	---
Mongolia	910	35.8
New Zealand <sup>2</sup>	4236	103.4
Philippines	---	---
Singapore	1005	23.7
Sri Lanka	97	0.5
Thailand	---	---
Vanuatu	---	---
Vietnam	---	---

---

<sup>1</sup> refers to 31.12.2004

<sup>2</sup> Some offenders are serving more than one non-custodial sentence order

## Correctional Statistics for Asia and Pacific 2005

### Trend of Imprisonment Rate in Asia and the Pacific (1995-2005)

	1996	1997	1998	1999	2000	2001	2002	2003	2004	2005
Bangladesh										
India	24.3	24.61	28.85	28.98	27.58	30.51	30.68	30.57		
Indonesia	23.1	21.3	24	26	25.4	30.9		36.7		46
Nepal										
Philippines	27	28.5	30.3	28		30.9	31.9	35		38.1
Pakistan								28.8		

### Imprisonment Rate

	1996	1997	1998	1999	2000	2001	2002	2003	2004	2005
Cambodia	28.3	27.2	29.1	36	45.9	51.5	49	52.9	56.5	67.4
Japan <sup>1</sup>	37.7	39.6	40.3	41	44.3	48.3	52.8	54.6	57.8	59.9
Solomon Islands	40.9	38.7	25.5	31					54.0	
Tuvalu					66.7					
Vanuatu							48	46.5		69
Vietnam	58.9		70.5	70.5						107.7

### Imprisonment Rate

	1996	1997	1998	1999	2000	2001	2002	2003	2004	2005
Australia	93.4	95.1	99.9	108.8	108.9	111.2	111	116.1	123.1	119.4
Brunei Darussalam	114.6		96.9	88	98.4	119.3	136.7	146.2	137.6	137.5
China	106.7	115.2	120	112	109.8	112.8	116.7	121.3	122.3	
Kiribati					73.1	74.1	75.7	78.1	95.9	87.6
Papua New Guinea	99.1		94.8	94		86.7	67			
Sri Lanka		77.8	78.4	100	88.7	106	93.3	105.1	108.9	121.3
Tonga					55.3	90.2	110	111.9	116.0	



**Imprisonment Rate**

	1996	1997	1998	1999	2000	2001	2002	2003	2004	2005
Cook Islands					153.3	165	117.6	90.4		
Fiji	130.4	141.1	117.5	152	152.5	142.2	115.7	126.7	139.7	130.9
Korea	138.7	120.3	152.9	147	135.3	131.5	128.9	122.5	119.4	114.8
Malaysia	108.2	108.4	120.5	123	104	124.1	125.2	158.5	173.7	137.1
New Zealand	129.6	143.1	146.3	152	148.1	154.7	149.3	155.3	167.5	171.6
Samoa			109.3							

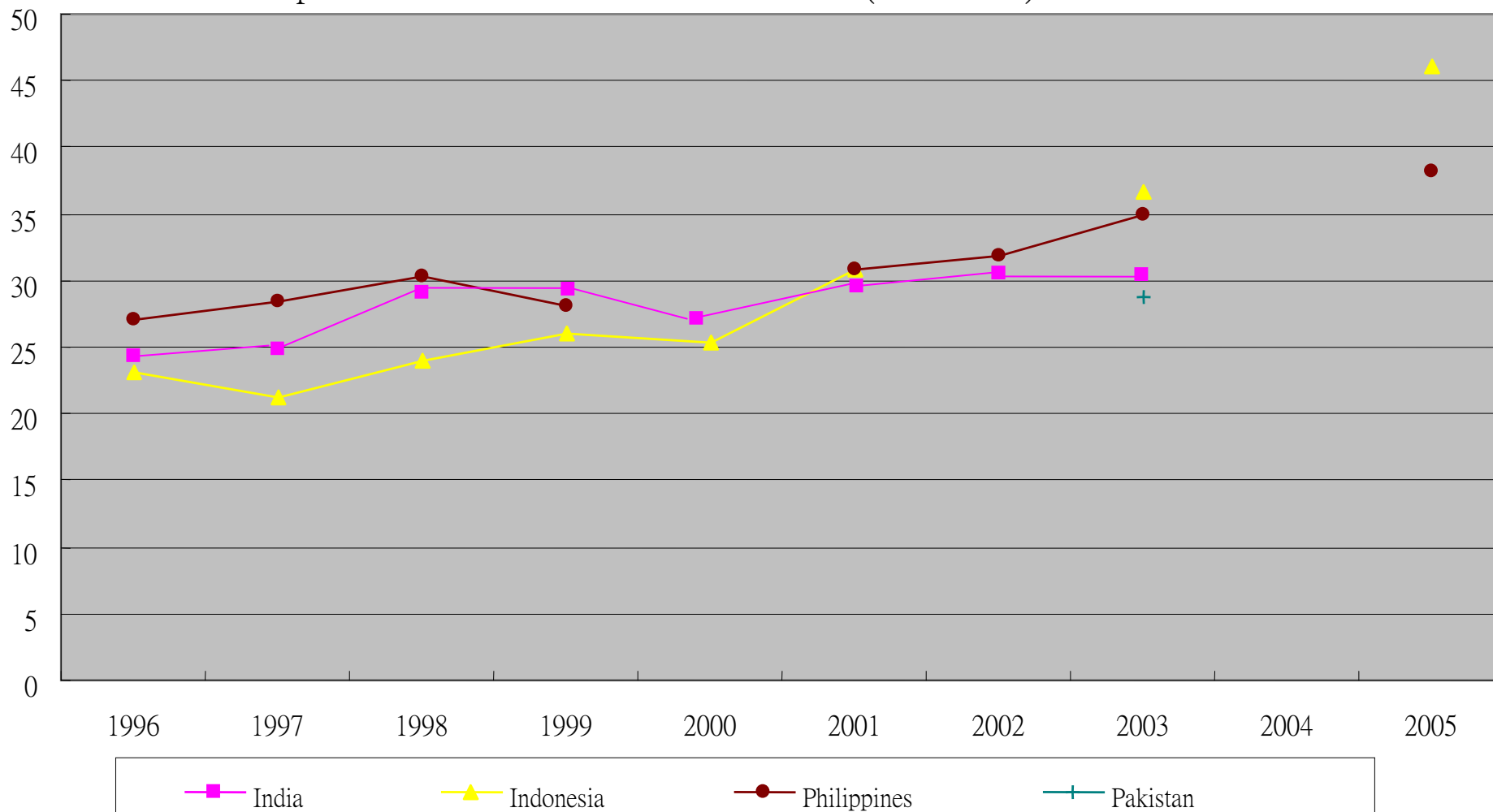
**Imprisonment Rate**

	1996	1997	1998	1999	2000	2001	2002	2003	2004	2005
Canada		446	114.9	109	107	103.7	102.5	103.2	101.1 <sup>2</sup>	
Hong Kong	201.1	184.4	163.2	164	164	173.8	181.2	180.1	191.3	176.5
Macao	114.3	154.7	152	180	207.7	195.7	208.3	200.7	194.4	192.1
Singapore	304.2	517.3	289.8	317	344.8	366	394.8	438.4	402.3	356.7
Thailand	173.1	201.6	270	320	334.1	351.8	402.6	340.5	304.3	265.8
Mongolia	252.9		253.5	256		277.3	297.1	318	255.6	275

<sup>1</sup> refers to 31.12.2004

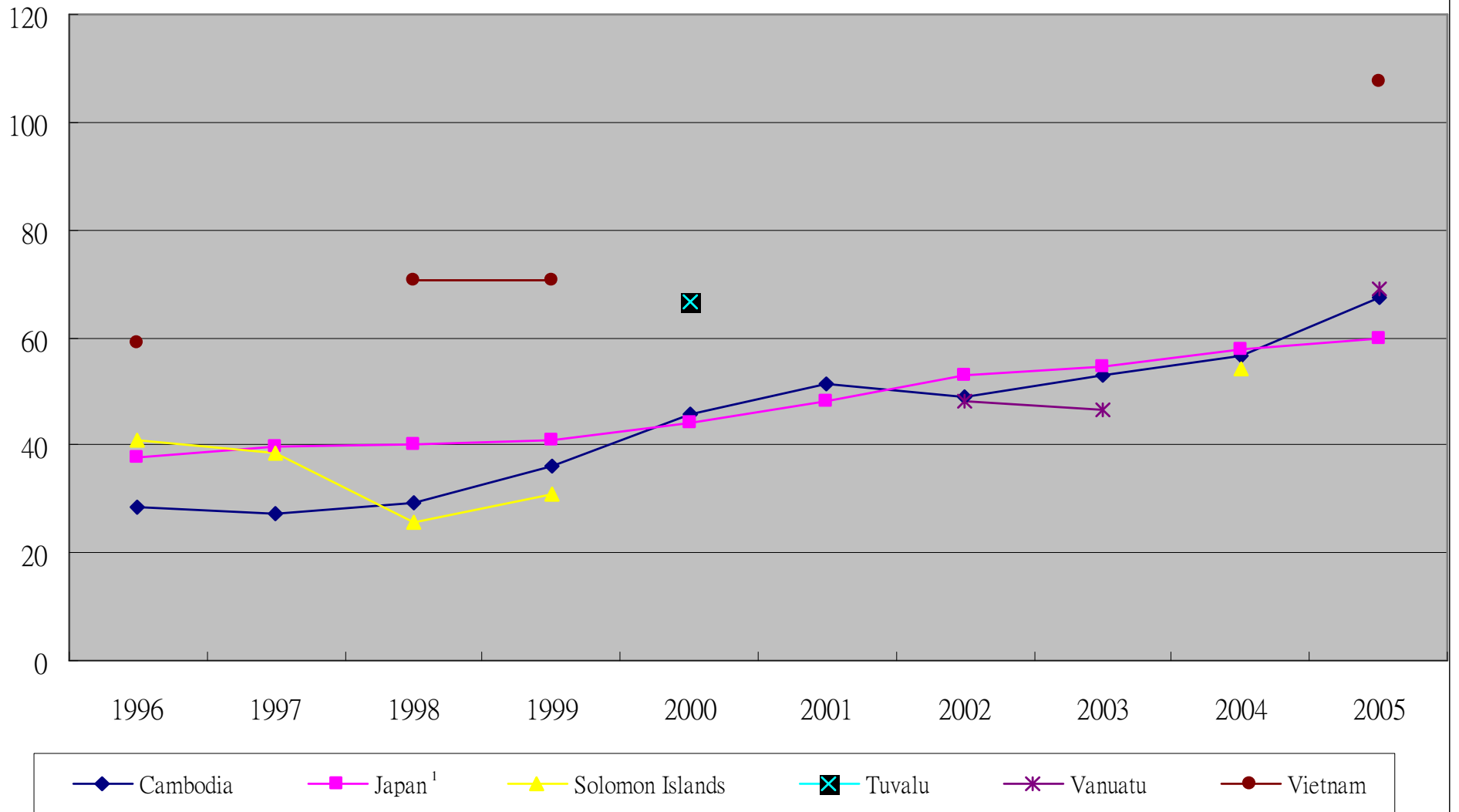
<sup>2</sup> refers to 2003-2004

Imprisonment Rate of Asia and the Pacific (1996-2005) - Chart 1A



-per 100,000 of the general population

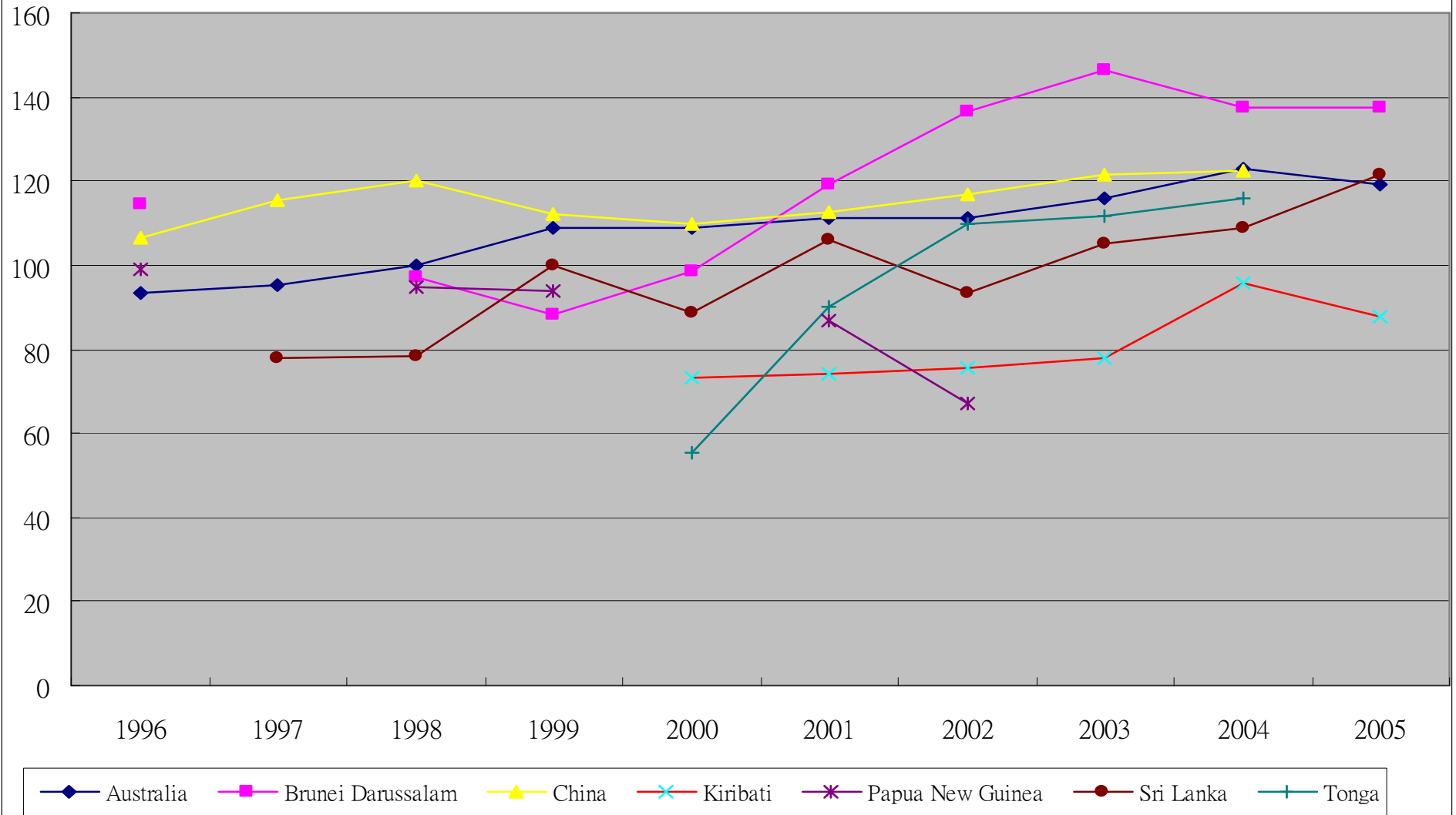
Imprisonment Rate of Asia and the Pacific (1996-2005) - Chart 1B



<sup>1</sup> refers to 31.12.2004

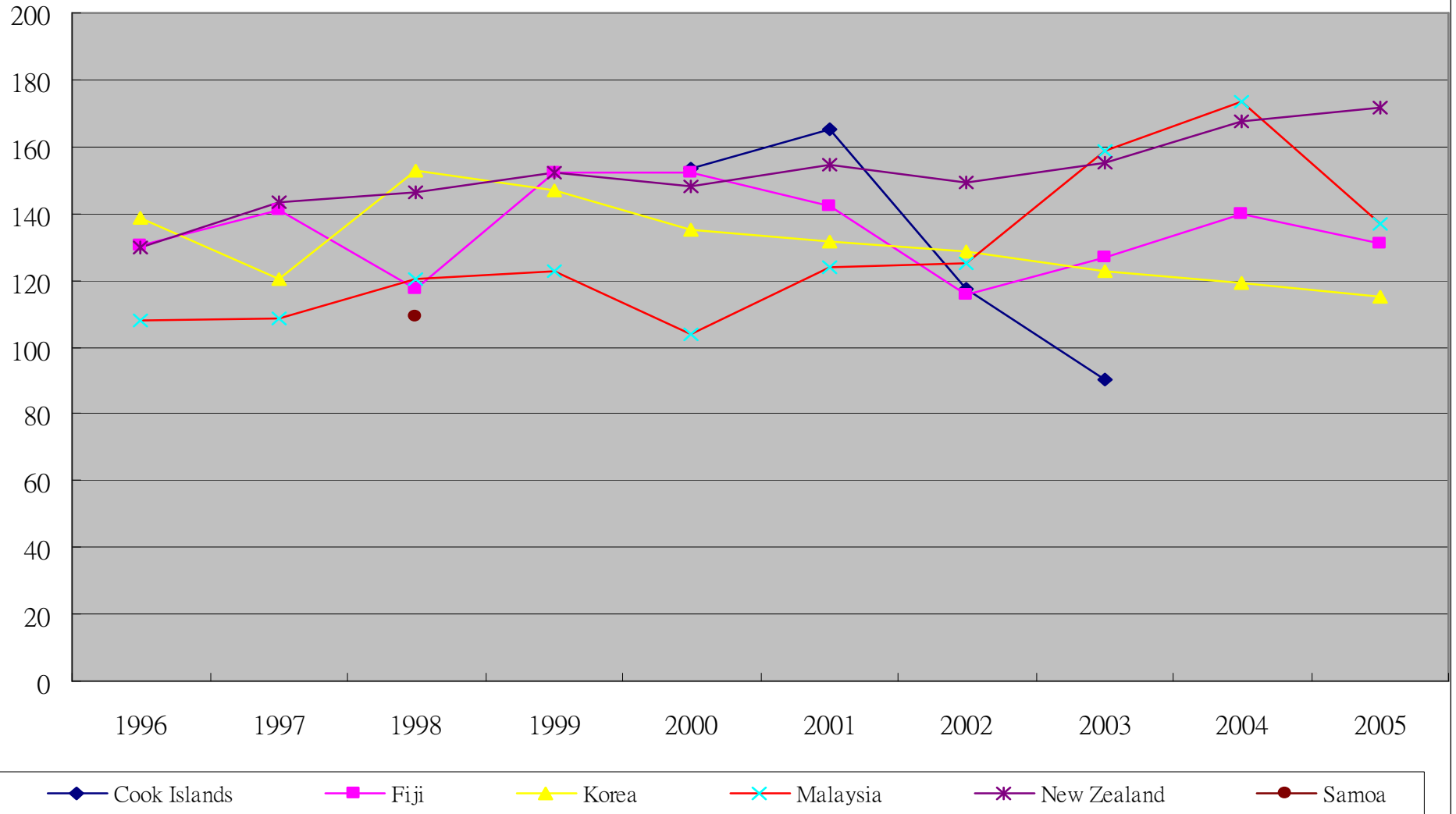
-per 100,000 of the general population

Imprisonment Rate of Asia and the Pacific (1996-2005) - Chart 1C



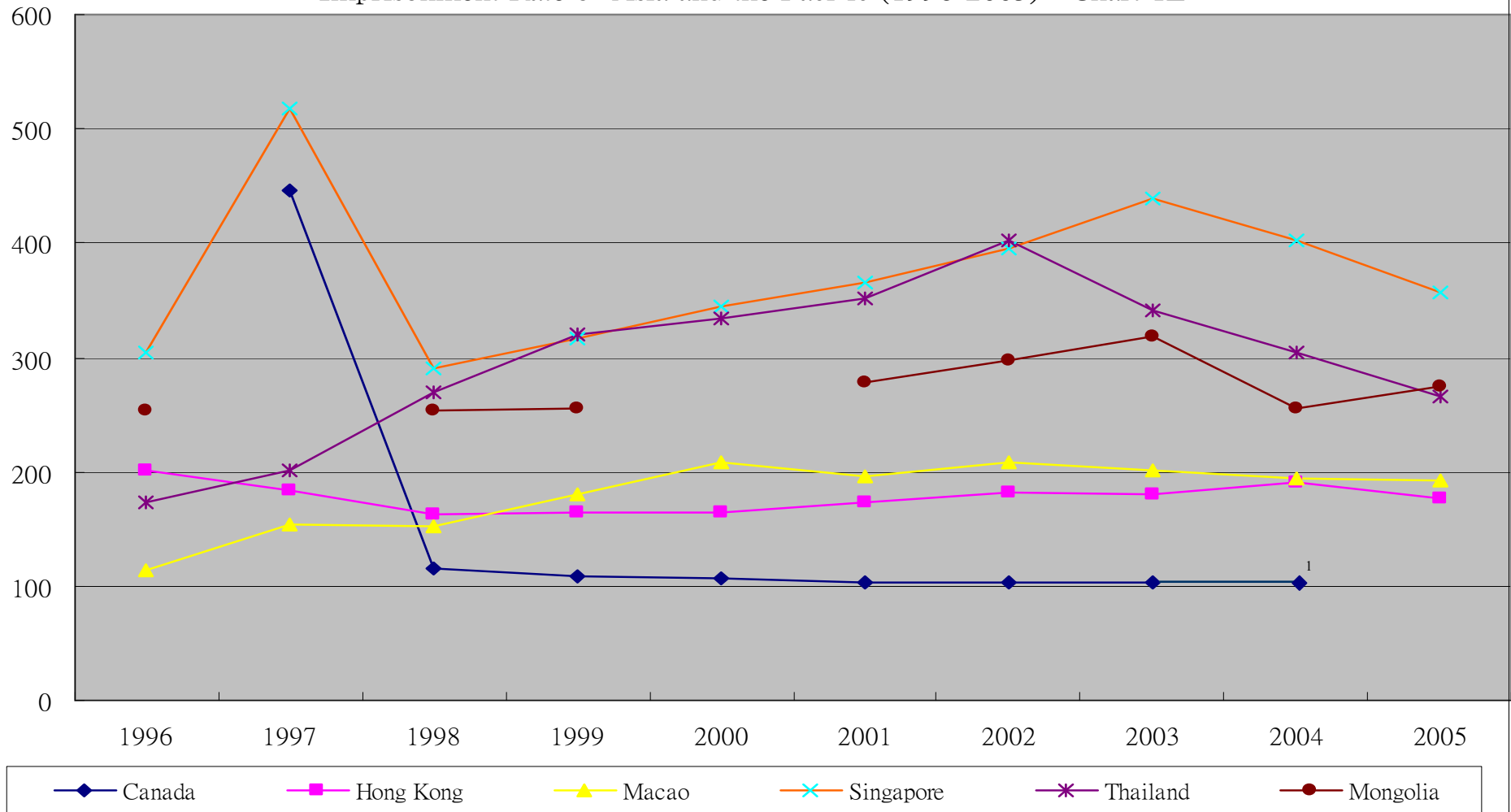
-per 100,000 of the general population

Imprisonment Rate of Asia and the Pacific (1996-2005) - Chart 1D



-per 100,000 of the general population

Imprisonment Rate of Asia and the Pacific (1996-2005) - Chart 1E



(An additional 7608 persons were detained in Drug Rehabilitation Centres managed by the Singapore Prison Service in 1995)

<sup>1</sup> refers to 2003-2004

-per 100,000 of the general population

## Correctional Statistics for Asia and the Pacific 2005

### Trend of Remand Rate (1996 - 2005)

Country	1996	1997	1998	1999	2000	2001	2002	2003	2004	2005
Australia	12.8	13.8	14.8	16.9	19.8	22.3	22.2	24.5	25.7	26.3
Cambodia	10.1	9.1	10.5	13	16.4	15.9	17	16.1	17.7	20.1
Canada			19.1	21	21.4	21.9				
Hong Kong	19.9	18.6	18.1	14.3	16.1	18.7	19	20.3	21.6	21.1
India	17.5	19.61	21.21	21.06	19.63	21.48	21.23	20.38		

Country	1996	1997	1998	1999	2000	2001	2002	2003	2004	2005
Bangladesh			---	---	---					
Brunei Darussalam	8.6		13.4	8.7	9.5	6.0	12.3	4.3	11.6	9.8
Cook Islands					13.3		14.7	4.8		
Fiji	10.2	8.4	5.7	9	8.1	20.6	13.8	17.4	13.5	11.2
Indonesia	8	6.2	9.5	11	10	10.4		14.6		19.4

Country	1996	1997	1998	1999	2000	2001	2002	2003	2004	2005
Philippines	3.2	2.9	3.1	2.2						3.3
Solomon Islands	4.5	5.5	7.4	10					13.7	
Pakistan								1.7		
Tonga							9	5.9	1	
Vanuatu				4.9			3	4		13

Country	1996	1997	1998	1999	2000	2001	2002	2003	2004	2005
Kiribati					9	7.1	2.4	8.3	5.9	2.4
New Zealand	13.9	16.3	18	18.8	19.6	23.3	24.8		31.4	

Papua New Guinea	28.8	28.1	28.1		31.4	23.6				
Samoa										

**Trend of Remand Rate (1996 - 2005)**

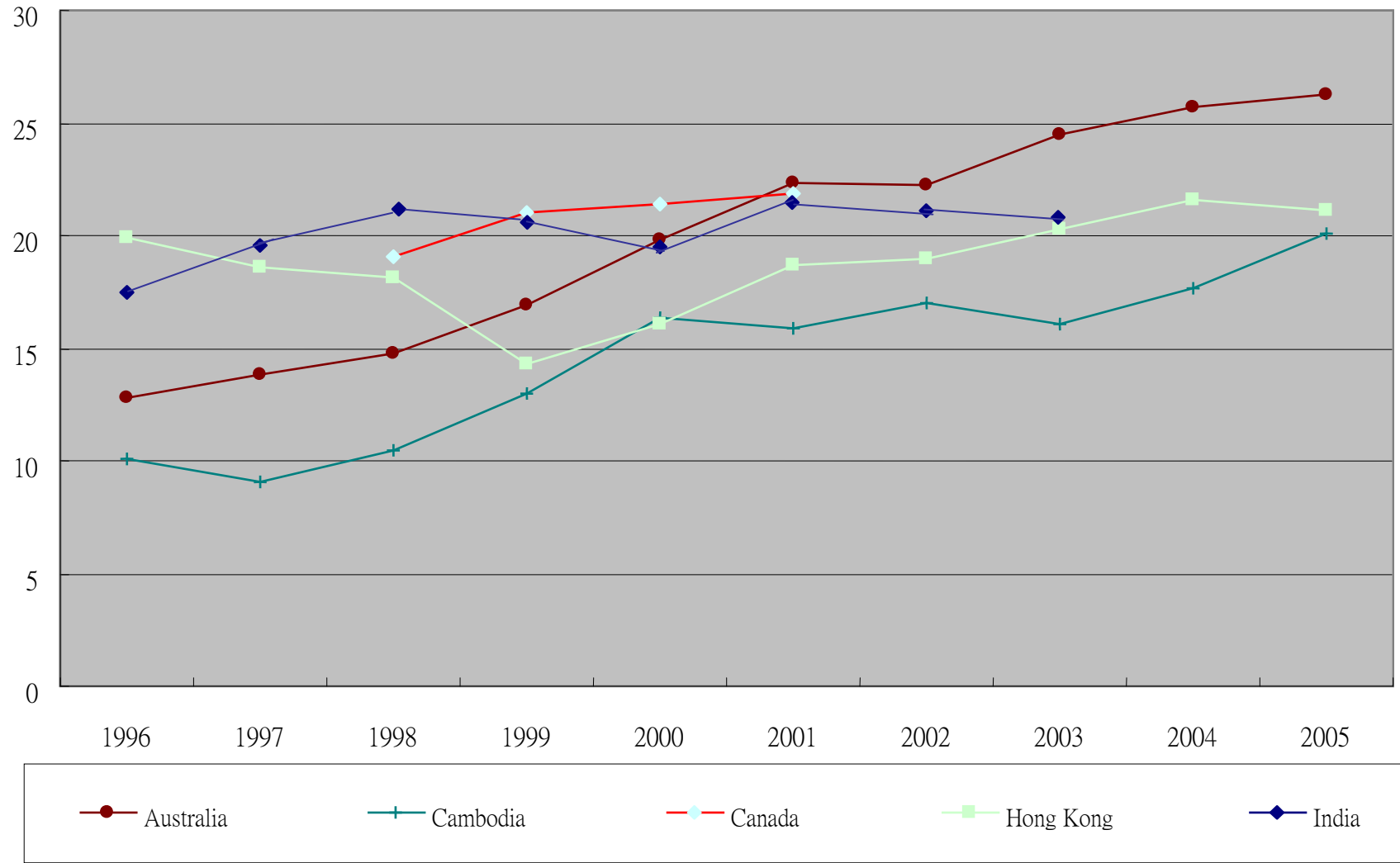
Country	1996	1997	1998	1999	2000	2001	2002	2003	2004	2005
Japan <sup>1</sup>	6.8	7.1	71.6	7.3	8.3	8.7	9.3	9.5		8.9
Malaysia	33.5	28.1	31.8	35.9	31	36.7	36.5	48.6	68	51.4
Singapore	14.3	56.7	58.9	14.6	57.8	43.0	46.5	27.7	35.8	70.3
Sri Lanka		40.8	44.9	47.5	43.3	54.3	54.7	54.2	51.9	59.8

Country	1996	1997	1998	1999	2000	2001	2002	2003	2004	2005
Korea	64.7	49.1	71.6	62.8	52.5	51.2	48.7	45.3	45	38
Macao	32.8	48.4	43.6	43.2	59.9	42.3	36.2	21.6	21.6	29.7
Mongolia								63.7	43.6	74.1
Thailand	59	40.8	41.8	82.2	129.9	137.9	138.8	89.7	66.1	66.5

<sup>1</sup> refers to 31.12.2004

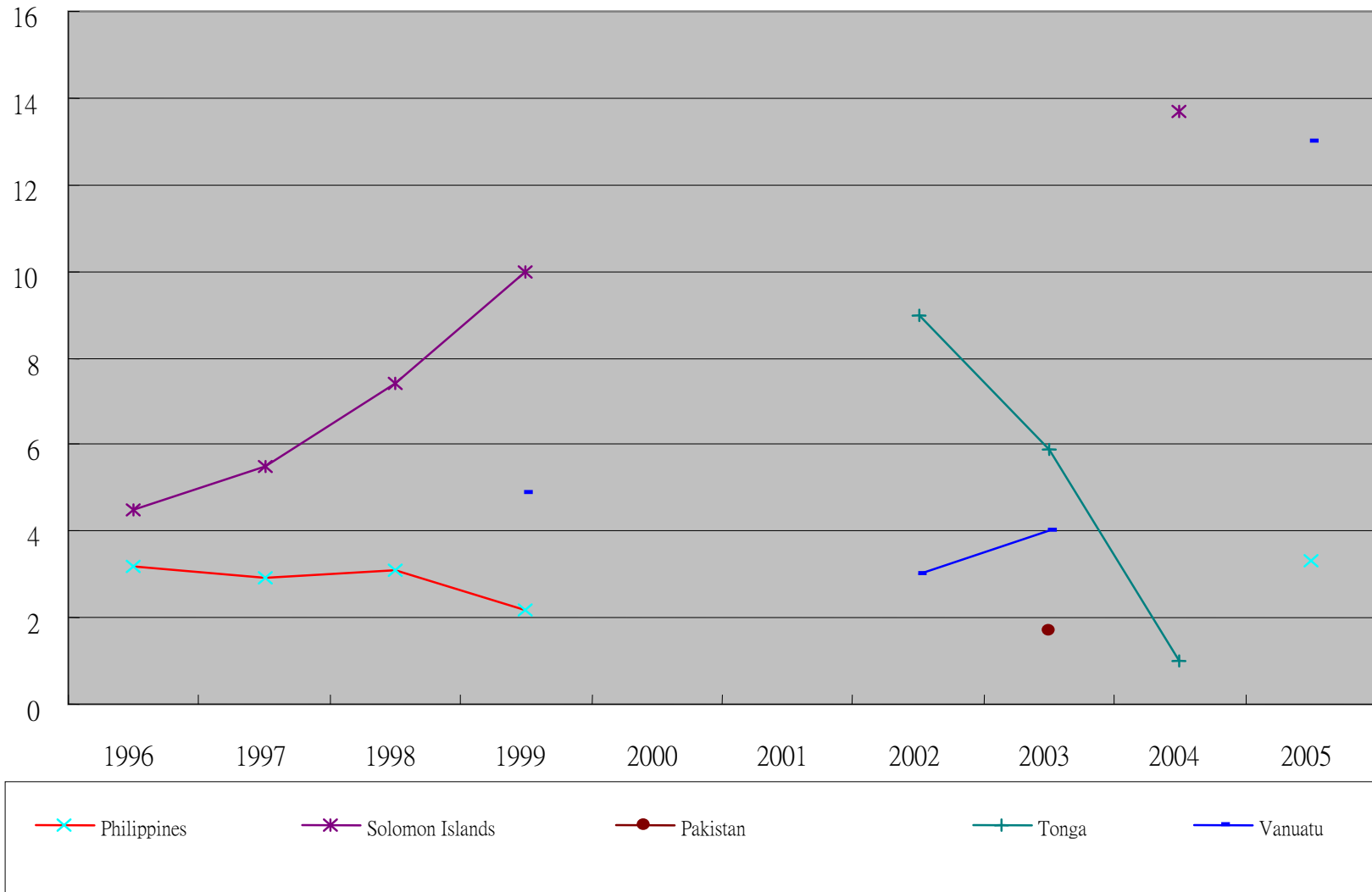


Remand Rate of Asia and the Pacific (1996-2005) - Chart 2A



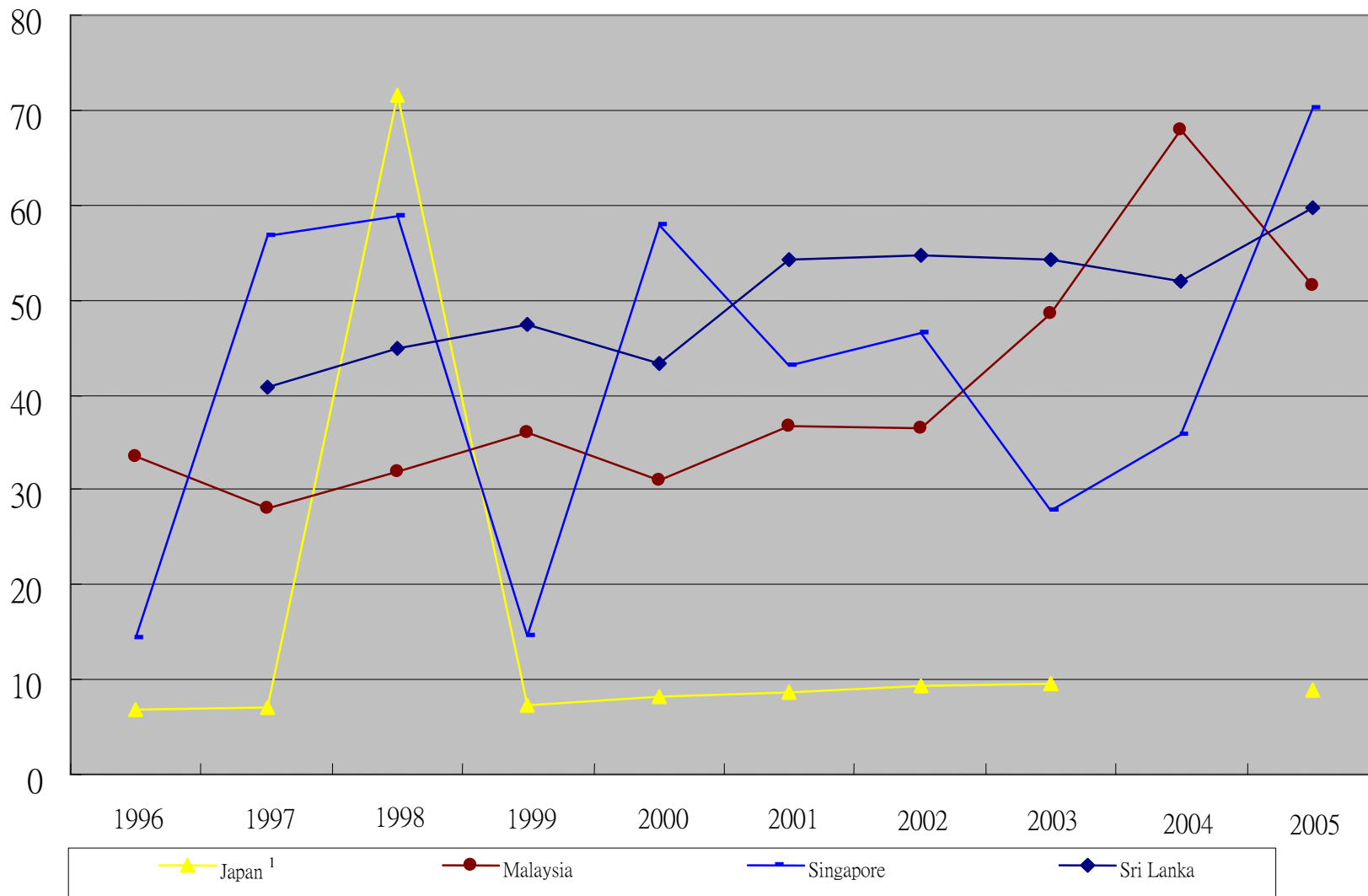
-per 100,000 of the general population

Remand Rate of Asia and the Pacific (1996-2005) - Chart 2B



-per 100,000 of the general population

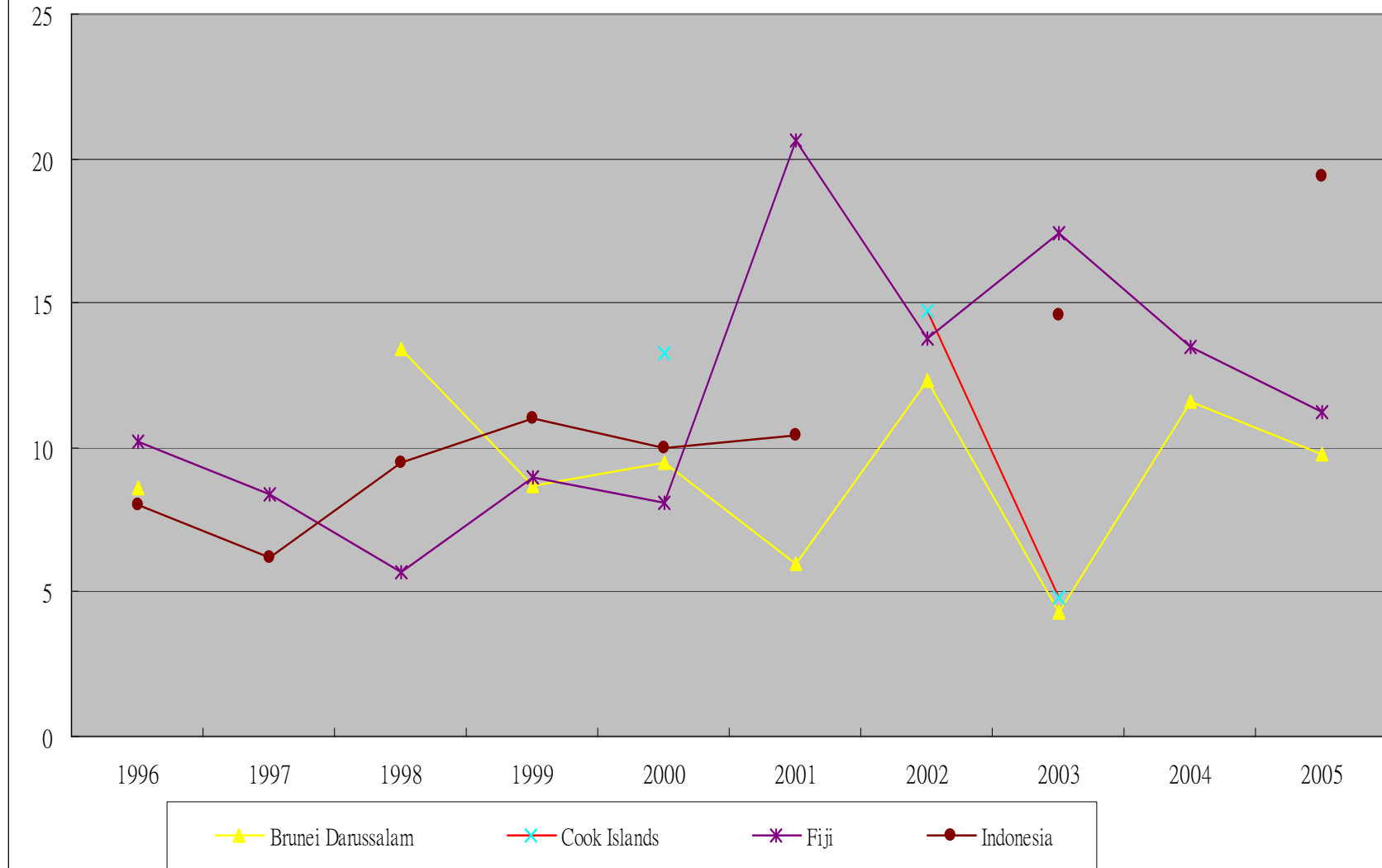
Remand Rate of Asia and the Pacific (1996-2005) - Chart 2C



<sup>1</sup> refers to 31.12.2004

-per 100,000 of the general population

Remand Rate of Asia and the Pacific (1996-2005) - Chart 2D



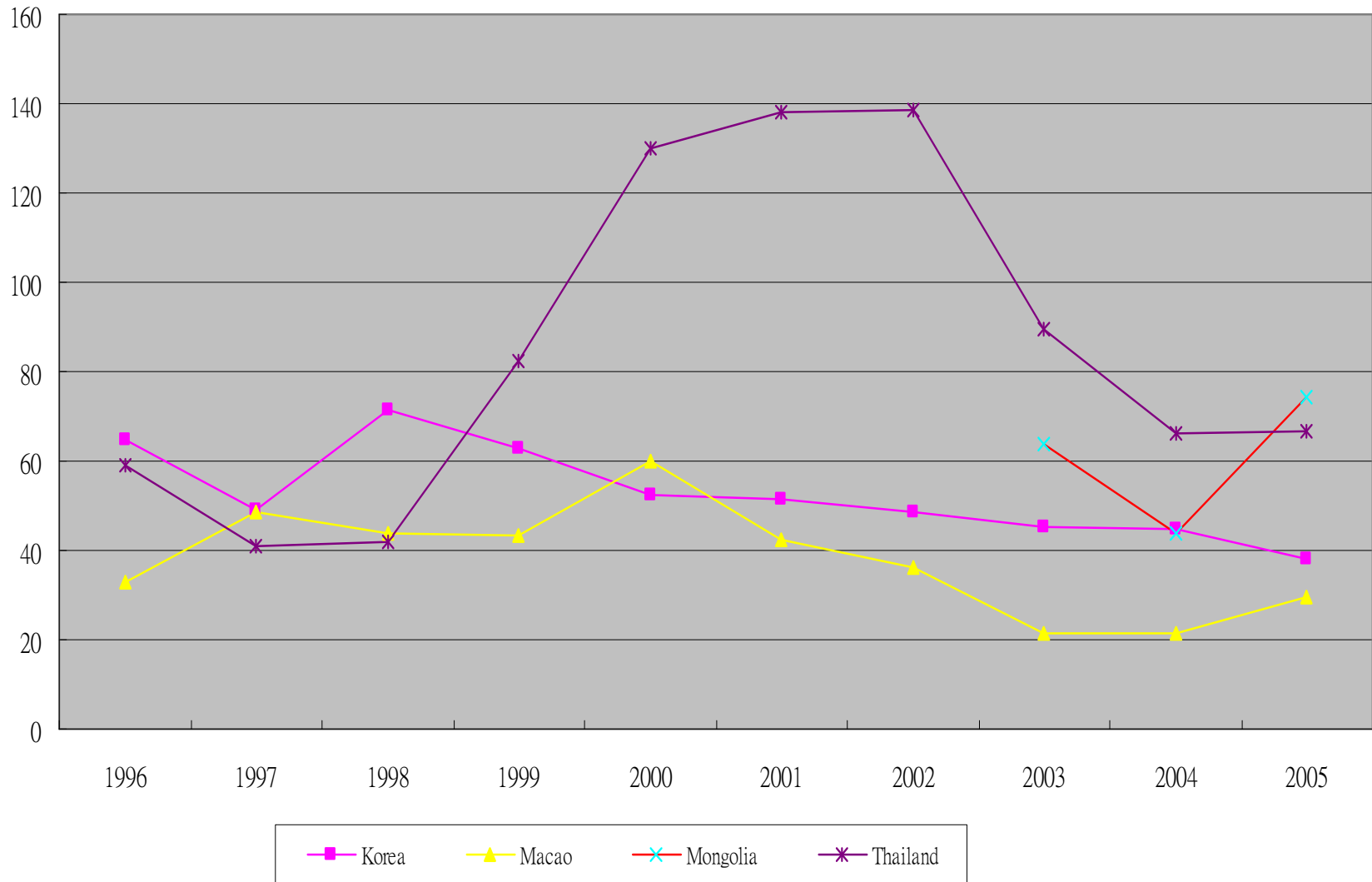
-per 100,000 of the general population

Remand Rate of Asia and the Pacific (1996-2005) - Chart 2E



-per 100,000 of the general population

Remand Rate of Asia and the Pacific (1996-2005) - Chart 2F



-per 100,000 of the general population

## Staff vs Inmate Ratio

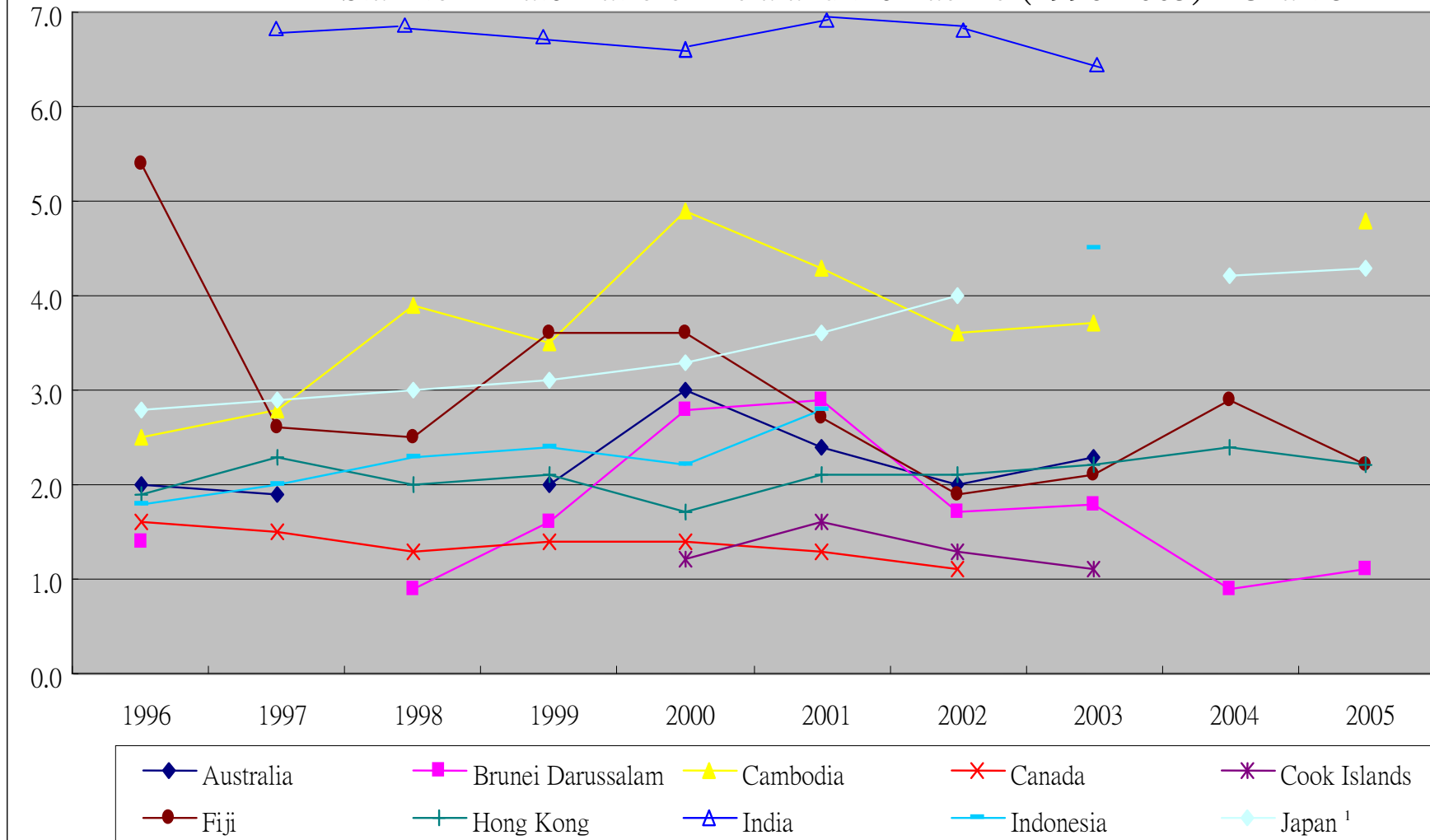
	1996	1997	1998	1999	2000	2001	2002	2003	2004	2005
Australia	2.0	1.9		2	3.0	2.4	2.0	2.3	2.3	
Brunei Darussalam	1.4		0.9	1.6	2.8	2.9	1.7	1.8	0.9	1.1
Cambodia	2.5	2.8	3.9	3.5	4.9	4.3	3.6	3.7		4.8
Canada	1.6	1.5	1.3	1.4	1.4	1.3	1.1			
Cook Islands					1.2	1.6	1.3	1.1		
Fiji	5.4	2.6	2.5	3.6	3.6	2.7	1.9	2.1	2.9	2.2
Hong Kong	1.9	2.3	2	2.1	1.7	2.1	2.1	2.2	2.4	2.2
India		6.7	6.8	6.66	6.5	7.0	6.7	6.4		
Indonesia	1.8	2	2.3	2.4	2.2	2.8		4.5		
Japan <sup>1</sup>	2.8	2.9	3	3.1	3.3	3.6	4.0		4.2	4.3
	1996	1997	1998	1999	2000	2001	2002	2003	2004	2005
Kiribati					1.6	2.1	2.1	2.2	2.8	2.3
Macao	1.5	2	2.1	1.7	2.4	1.8	1.9	1.8	1.8	1.8
Malaysia	2.8	2.8	3.5	3.2	2.9	3.0	3.1	4.1	3.7	3.3
Mongolia	5.2		5.8	4.9		4.8	4.0	5.6	3.6	3.4
Nepal										
New Zealand	1.9	2.1	2.1	9	2.1	2.1	2.2	2.4	2.2	2.1
Papua New Guinea	3.4					2.3	2.6			
Sri Lanka		3.6	3.3	4	3.3	3.8	3.7	4.3	4.6	4.8
Pakistan								2.8		
Tonga					0.8	1.4	1.3	1.5	1.7	
Vanuatu				1.5			2.8	2.9		4.9

	1996	1997	1998	1999	2000	2001	2002	2003	2004	2005
Bangladesh										
China	4.7	5	5.1		5.0	5.7	5.3	5.4	5.5	
Korea	5.1	4.7	6	5.9	5.3	5.1	5.0	4.8	4.7	4.2
Philippines	7.7	8.2	8.8	9		10.0	10.3	11.3		
Singapore	10.7	9	6.7	5.7		7.5	8.8	7.9	9.2	8
Solomon Islands	0.8	0.7	0.6	0.8					15.3	
Thailand	10.2	12.7	16.2	19.2	20.4	21.4	25.4	20.5	18.3	12.3
Vietnam	7.2									6.2
Samoa			4.9	4.9						

<sup>1</sup> refers to 31.12.2004



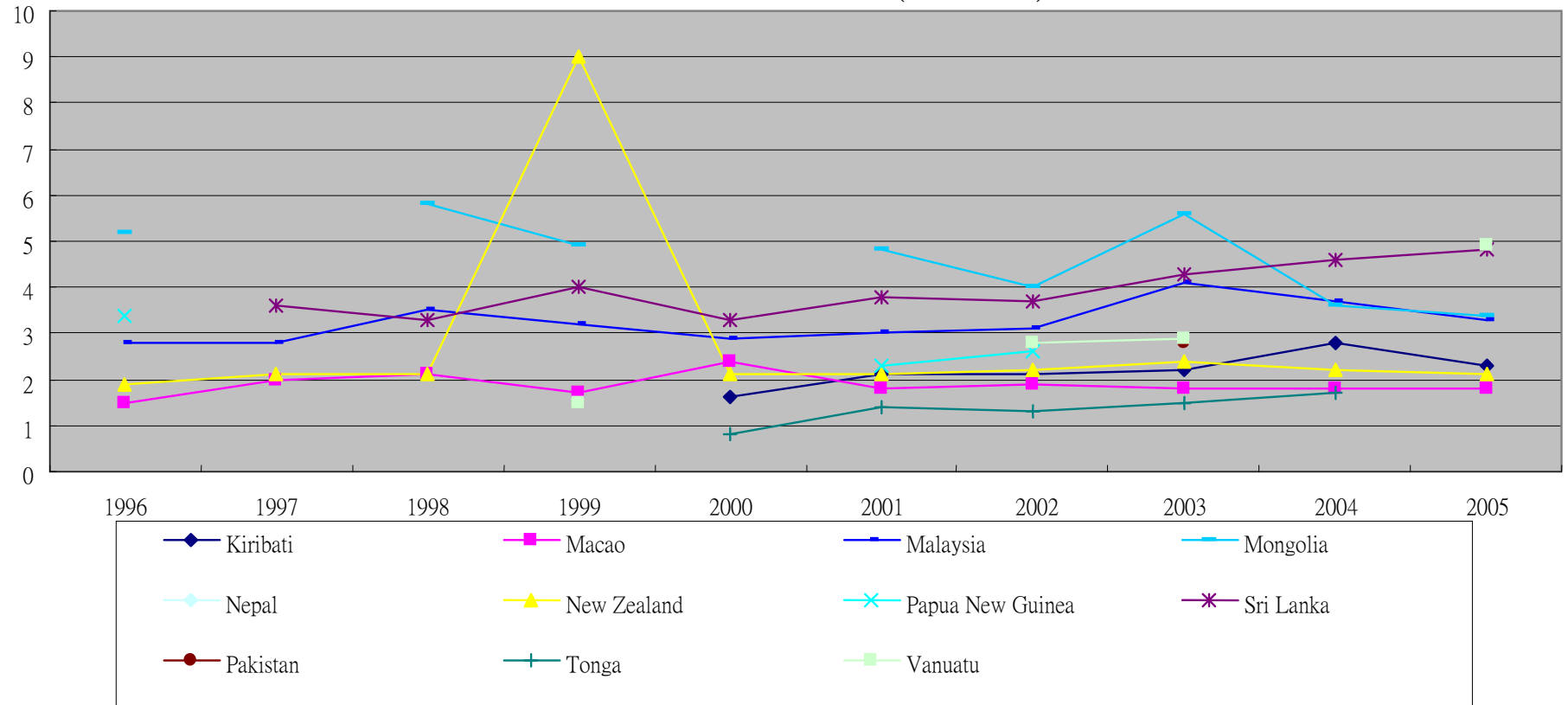
Staff to Inmate Ratio of Asia and the Pacific (1996-2005) - Chart 3A



-It is suggested that all categories of staff in prisons be included, but those working in headquarters and training colleges be excluded.

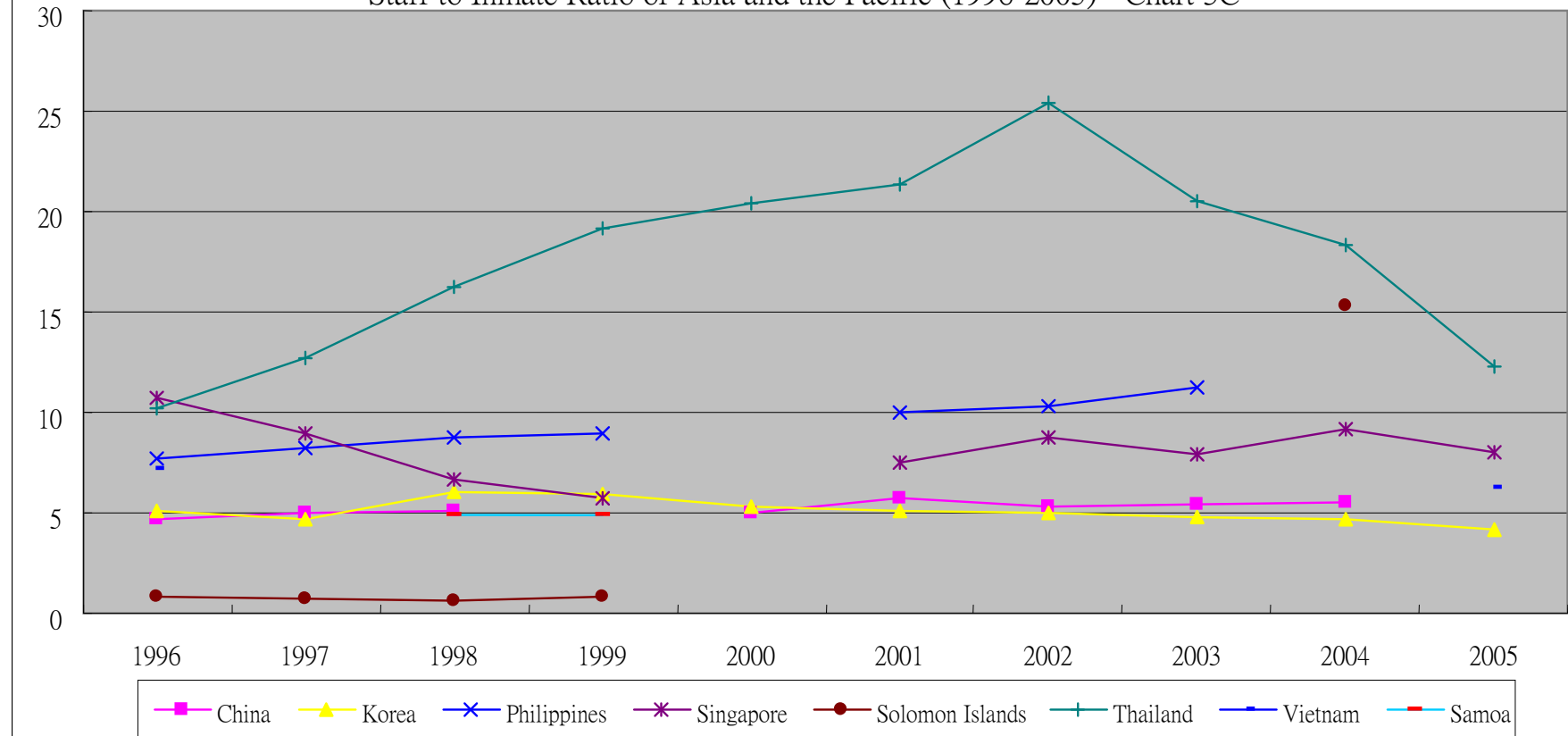
<sup>1</sup> refers to 31.12.2004

Staff to Inmate Ratio of Asia and the Pacific (1996-2005) - Chart 3B



-It is suggested that all categories of staff in prisons be included, but those working in headquarters and training colleges be excluded.

Staff to Inmate Ratio of Asia and the Pacific (1996-2005) - Chart 3C



-It is suggested that all categories of staff in prisons be included, but those working in headquarters and training colleges be excluded.  
 -Excluding 591 staff in Drug Rehabilitation Centres in Singapore in 1996.